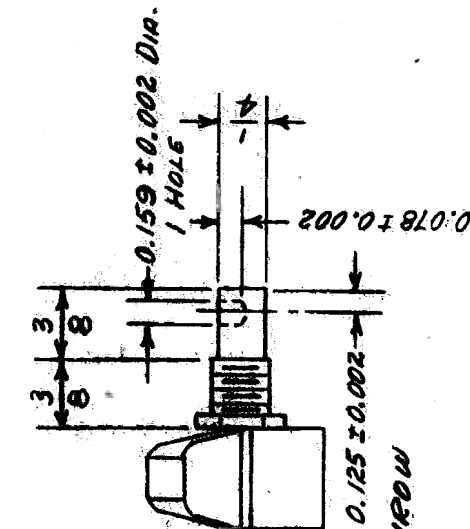


(A)

DOUBLE POLE - SINGLE THROW
TYPE # 1572



(B)

SINGLE POLE - DOUBLE THROW
TYPE # 1565

002346

NOTE:

1. POSITION SHOWN FOR HOLE IS WITH SWITCH IN EXTREME CLOCKWISE (RIGHT) POSITION AS VIEWED FROM SMART END.
2. EACH SWITCH TO BE SUPPLIED WITH 2 HEX. NUTS.
3. ALL DIMENSIONS ARE IN INCHES.
4. USE FIGURED DIMENSIONS - DO NOT SCALE.

MOORE SCHOOL OF ELECTRICAL ENGINEERING
UNIVERSITY OF PENNSYLVANIA

12

ROTARY SNAP SWITCH

MATERIAL	FINISH	SCALE
✓	✓	APPROX. FULL SIZE
Drawn by: MSM	Checked by: RFS	Approved by: RFS
JULY 17, 1944	17 Jul 44	17 Jul 44

PX-1-202