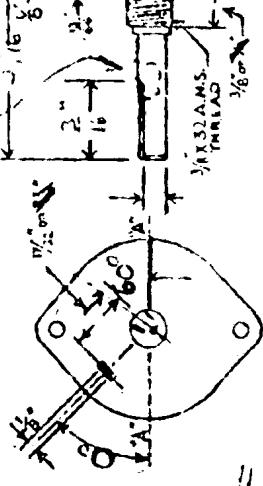
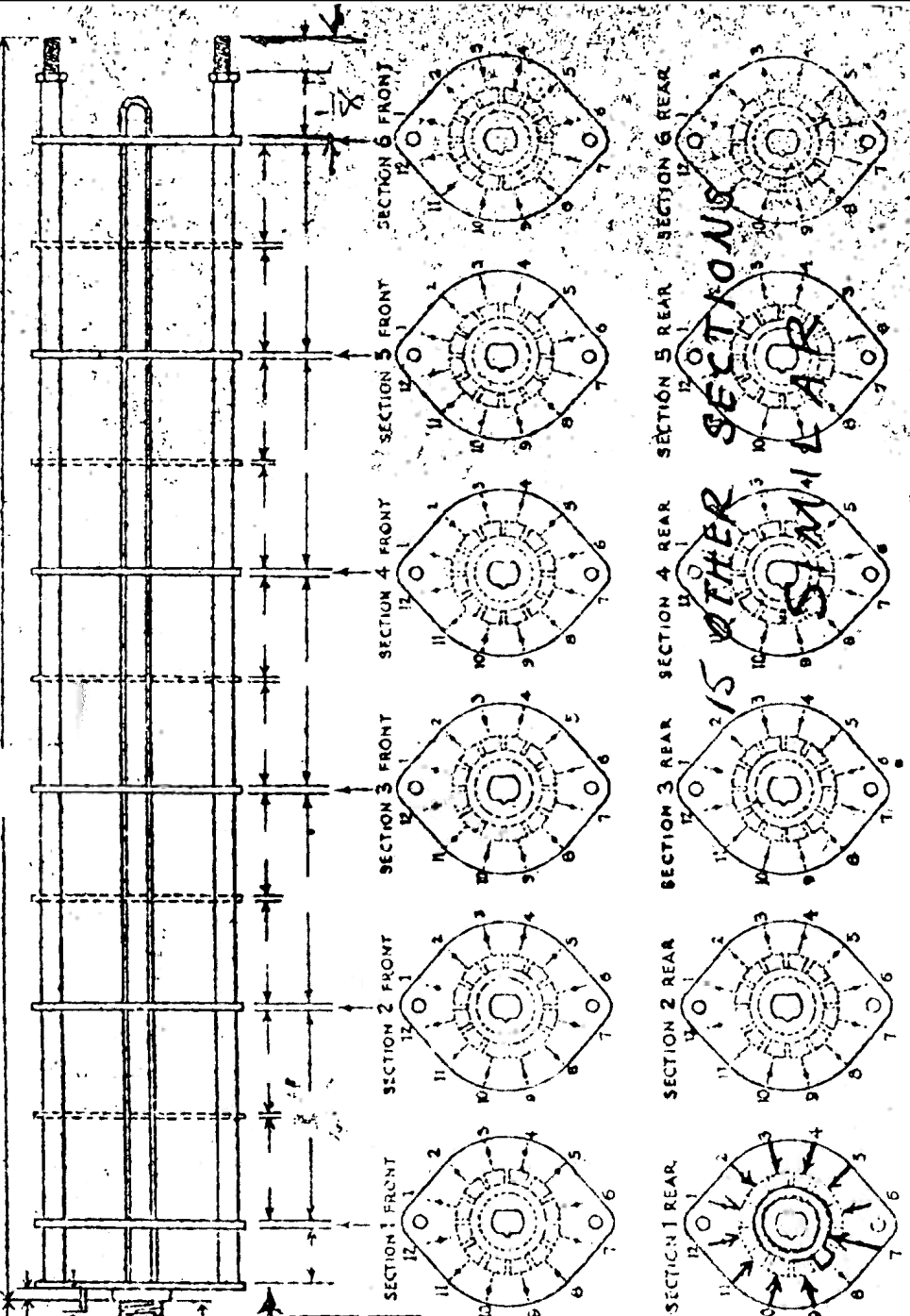
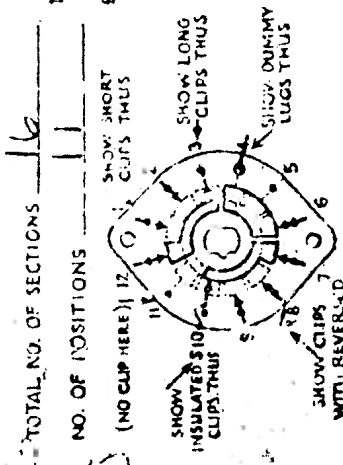


# OAK III TYPE SWITCH

0.128" dia. hole  
5/16" deep



DRAW IN FLAT ON ABOVE  
SHAFT IN EXTREME  
COUNTER, CLOCKWISE  
POSITION AND SHOW  
ANGLE IN REFERENCE  
TO LINE "A-A"



TOTAL NO. OF SECTIONS 16

NO. OF POSITIONS

(NO CLIP HERE) 12

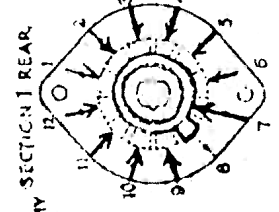
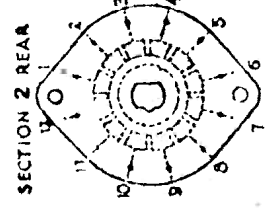
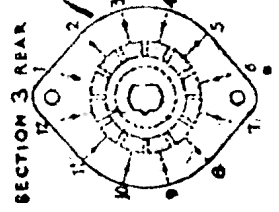
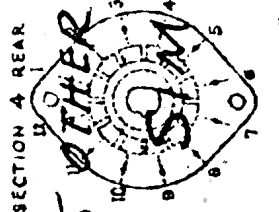
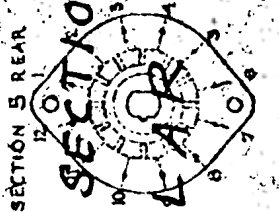
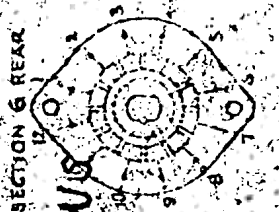
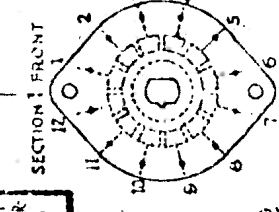
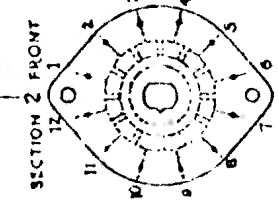
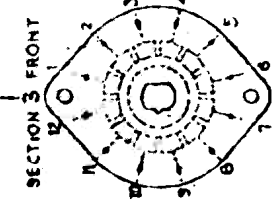
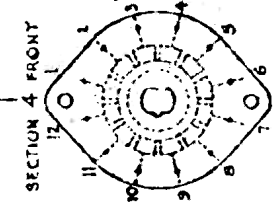
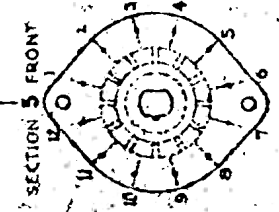
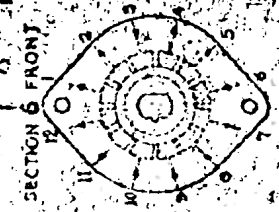
SHOW SHORT CLIPS THUS

SHOW LONG CLIPS THUS

SHOW DUMMY LUGS THUS

SHOW CLIPS WITH REVERSED LUGS THUS

OUTLINE ROTOR BLADES AS ABOVE IN EXTREME COUNTER POSITION (LEFT) POSITION



### CUSTOMER'S NOTES

- Sators—1/8" thick; with insulated clips 3/16" mounting centers 17/32"
- Locating Keys—1/8" wide 1/16" or 3/32" radius at 15° intervals from "A-A." These dim. apply to Double Keys which are 180° apart.
- Min. Spacing of Sections—Single sided sections 3/16" when clips face away from each other, 3/8" when clips face in same direction as adjoining sections, and 1/2" when clips of both sections face toward each other.
- Min. Spacing between Front Plate and first section 1/4" with clip to rear of first section, 3/8" with clips facing front.
- Shields—Standard 1/8" thick and shape of stators.
- Rotor Blades—The rotor blades are normally furnished with "shorting" type teeth which maintain connection with one contact until after the next contact is made.
- "Non shorting" type rotor teeth are available if specified and they completely open one contact before they connect to the next contact.

OTHER SECTION 15  
SMALLER

Non Shorting  
Contact

Order No. 23439-146

USED IN I. U. (1) & Tube Tester (1)

CUSTOMER'S EX 216 PART NO.

Morris School 11. 5. P. CUSTOMER

OAK MANUFACTURING CO. 1860 CLEVELAND AVE. CHICAGO, U. S. A.