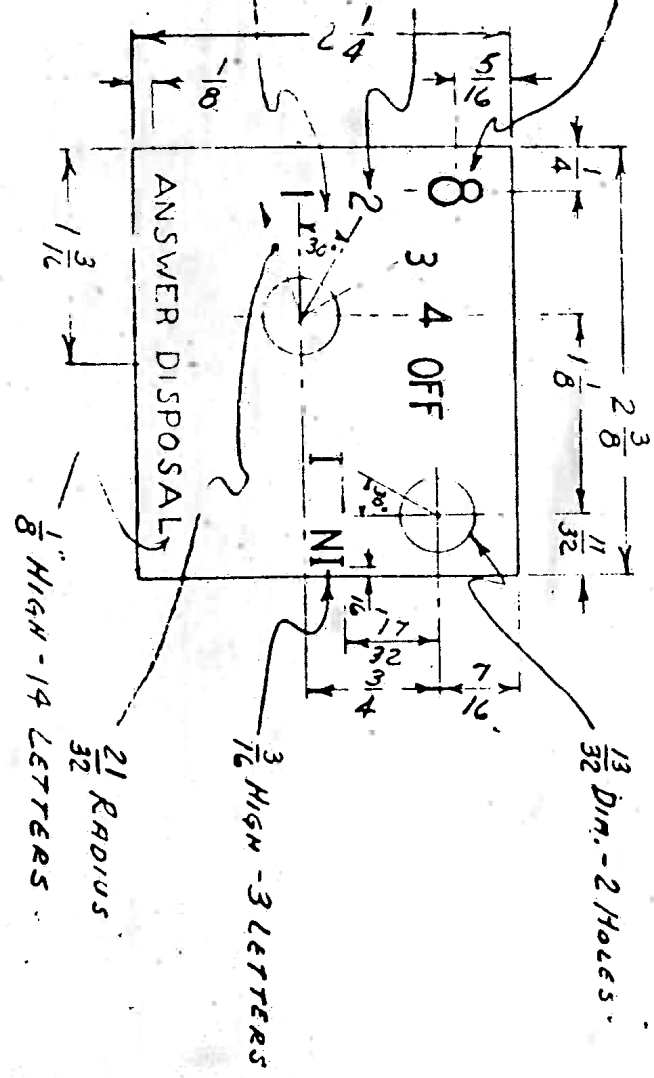


REVISIONS

NEW DRAWING DUE TO GENERAL REVISIONS	1
J. Cummings 4-9-45	

5/16 HIGH - NUMBER VARIES FROM "1" TO "8" INCLUSIVE  
 3/16 HIGH - 4 NUMBERS & 3 LETTERS  
 30° SPACING BETWEEN "1" TO "OFF" INCLUSIVE  
 ALL CHARACTERS ARE REVERSE ETCHED ON PLATE.



MOORE SCHOOL OF ELECTRICAL ENGINEERING  
 UNIVERSITY OF PENNSYLVANIA

DIALER AND SQUARE ROUTER ANSWER SWITCH DIAL PLATE

MATERIAL	FINISH	SCALE
0.032" SHEET ZINC	PLATED & BRASS-ROUNDED BLACK ENGRAINED	FULL SIZE

Drawn By: J. Cummings AUGUST 29, 1944	Checked By: F. MURK 10-1-44	Approved By: T.K. SHREPPERS 9-31-44	PX-10-202
USE FIGURED DIMENSIONS & DO NOT SCALE			