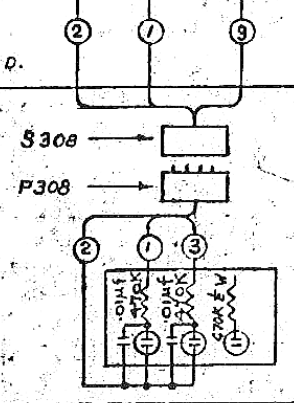


NOTE:
ALL RESISTORS ARE 10Ω 20 WATT UNLESS OTHERWISE STATED.

NOTE: DC IS ON SHADED PINS OF SAB SOCKETS.

CORRECTED.
R. J. Harvey 2/12/45 1
SHADED DC PINS ON
SAB SOCKETS. ADDED
NOTE
SEMI-FINAL REVISION
R. J. Harvey 6-29-45 2
WIRING ON SOCKETS SAC1 TO
SAC3 & ALFON LAMPS ALTER-
ED FOR 120/208V. WYE
OPERATION.
J. Summerville 5 FEB 47 3



MOORE SCHOOL OF ELECTRICAL ENGINEERING
UNIVERSITY OF PENNSYLVANIA

CONSTANT TRANSMITTER TRANSFORMER PANEL No. 2

MATERIAL	FINISH	SCALE
DESIGNED BY: CJM-C Nov 30, 1944	CHECKED BY: RJA 1 Dec 44	APPROVED BY: RJA 1 Dec 44

PX-11-112