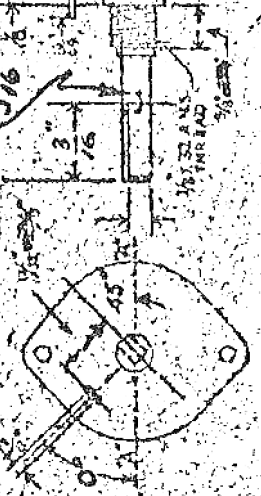


OAK III TYPE SWITCH

OVER DIA. 5" DEEP 1 HOLE NO FEAT. 5/16"



DRAWN FLAT ON ABOVE SHAFT IN EXTREME POSITION, COUNTER-CLOCKWISE FROM FRONT OR POSITION AND SHOW ANGLE IN REFERENCE TO LINE "A-A"

FRONT AND REAR OF SECTIONS VIEWED FROM FRONT OR REAR END OF SWITCH IN EXTREME COUNTER-CLOCKWISE POSITION

TOTAL NO. OF SECTIONS 10

NO. OF POSITIONS (NO CLIP HERE) 12

SHOW SHORT CLIPS TRUE

SHOW LONG CLIPS TRUE

SHOW DUMPKY LUGS TRUE

SHOW CLIPS WITH REVERSED LUGS TRUE

OUTLINE ROTOR BLADES AS ABOVE IN EXTREME COUNTER-CLOCKWISE (LEFT) POSITION

SECTION 6 FRONT

SECTION 5 FRONT

SECTION 4 FRONT

SECTION 3 FRONT

SECTION 2 FRONT

SECTION 1 FRONT

SECTION 6 REAR

SECTION 5 REAR

SECTION 4 REAR

SECTION 3 REAR

SECTION 2 REAR

SECTION 1 REAR

CUSTOMER'S NOTES

REVISION:

5/16" SHAFT LENGTH WAS 3/4"

WORK NO. 28186-M2

USED IN C.T. (120)

Stiles 1/2" thick, with individual dia. 1/4" minimum. Min. Spacing between Front Plate and Reel Section 1/8" with clip to rear of first section, 3/8" with clips facing front.

Leading Keys 1/8" wide 2" or 3/8" radius at 15° intervals from "A-A". These dia. only to Double Keys which are 1/8" thick.

Min. Spacing of Sections—Single sided section 3/8" when dia. face away from each other 1/2" when dia. face in same direction in adjoining sections and 3/4" when dia. of both sections face toward each other.

Notionals type rotor is available if specified and they completely even one front before they connect to the next contact.

Notionals type rotor is available if specified and they completely even one front before they connect to the next contact.

Notionals type rotor is available if specified and they completely even one front before they connect to the next contact.

Notionals type rotor is available if specified and they completely even one front before they connect to the next contact.