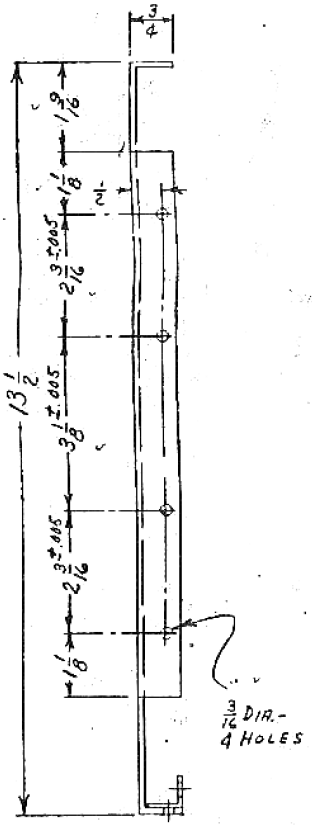
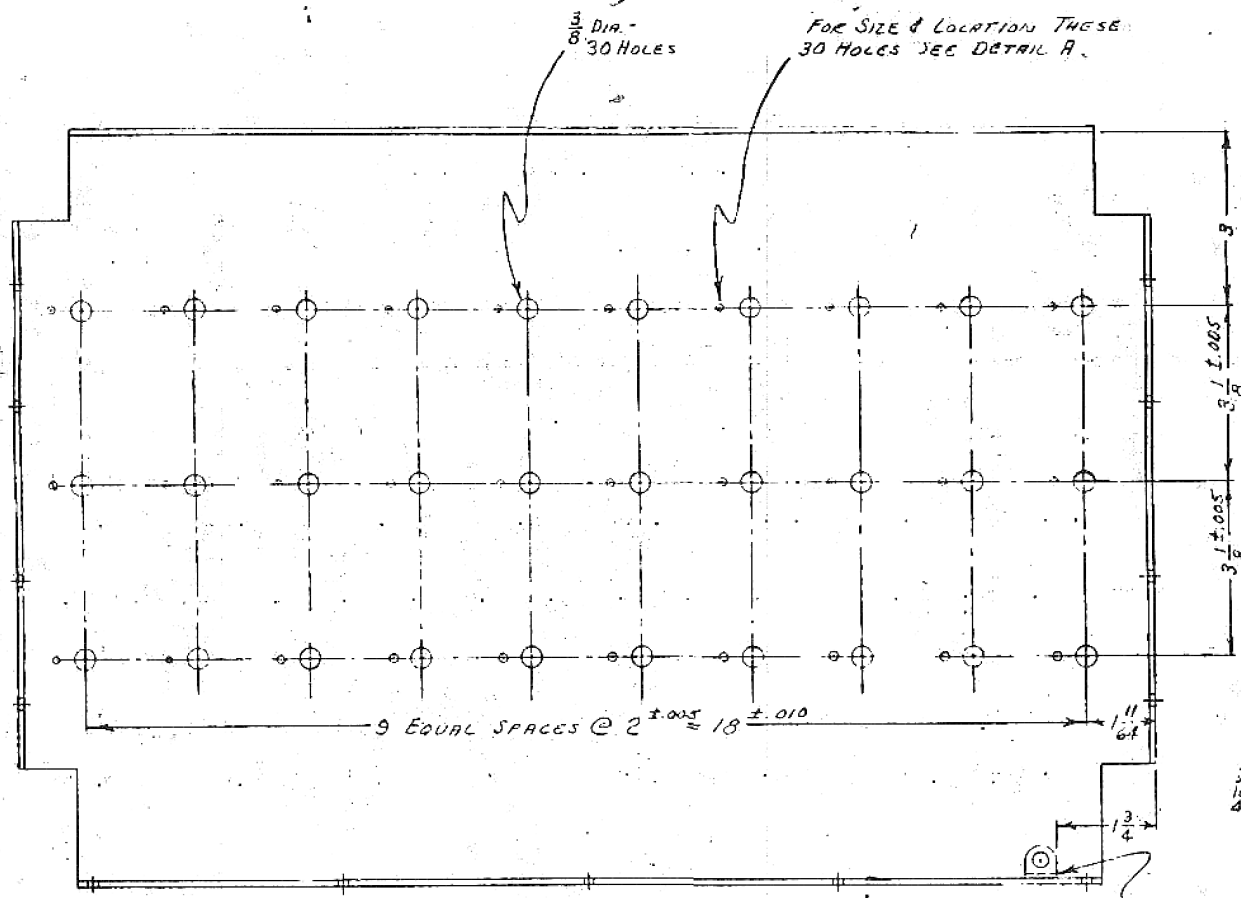


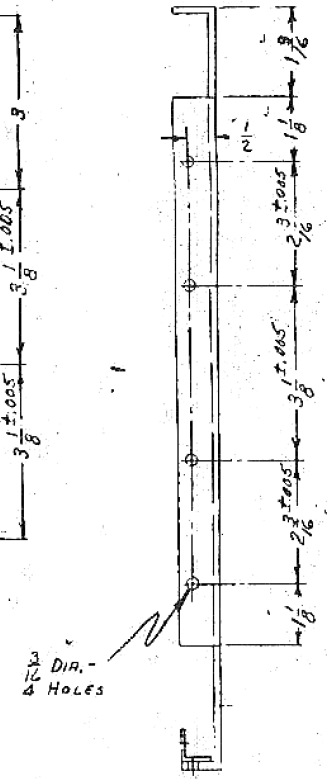
DETAIL OF GROUND LUG
SCALE - APPROX. FULL SIZE



3/16 DIA. - 4 HOLES

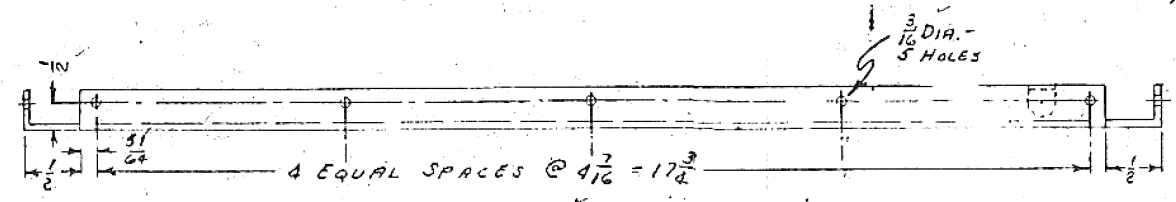


3/8 DIA. - 30 HOLES
FOR SIZE & LOCATION THESE 30 HOLES SEE DETAIL A.

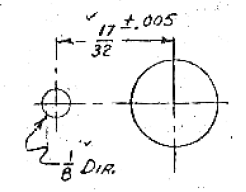


3/16 DIA. - 4 HOLES

SPOTWELD 3/4 THICK GROUND LUG WITH PROJECTING PART TIN-PLATED. MASK LUG BEFORE FINISHING.



3/16 DIA. - 5 HOLES



DETAIL A
SCALE - APPROX. DOUBLE SIZE

VARIATIONS ON FINISHED DIMENSIONS (UNLESS OTHERWISE MARKED)

BASIC DIMENSIONS	FRACTIONAL DIMENSIONS	DECIMAL DIMENSIONS
UP TO 1/2	± 1/128	± .005
ABOVE 1/2 TO 6	± 1/64	± .005
ABOVE 6 TO 24	± 1/32	± .010
ABOVE 24	± 1/16	± .015

ALL DIMENSIONS ARE IN INCHES.
USE FIGURED DIMENSIONS - DO NOT SCALE

MOORE SCHOOL OF ELECTRICAL ENGINEERING
UNIVERSITY OF PENNSYLVANIA

CONSTANT TRANSMITTER SWITCHING PANEL No 1

MATERIAL	FINISH	SCALE
1/2 SHEET STEEL	WRINKLED BLACK	1/2 FULL SIZE

Drawn by: J. CUMMINGS AUGUST 21, 1944	Checked by: J. J. J. J. 8-25-44	Approved by: J. J. J. J. 8-25-44
---	---------------------------------------	--

PX-11-205