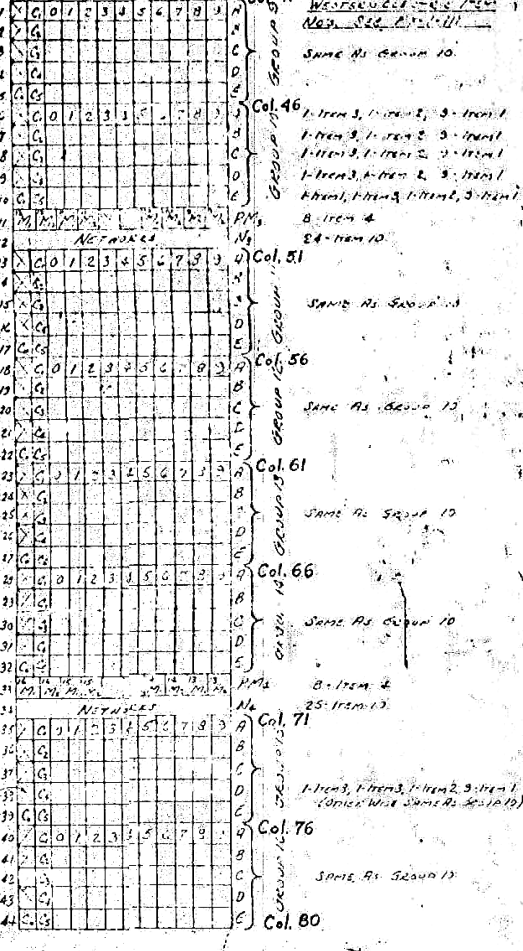
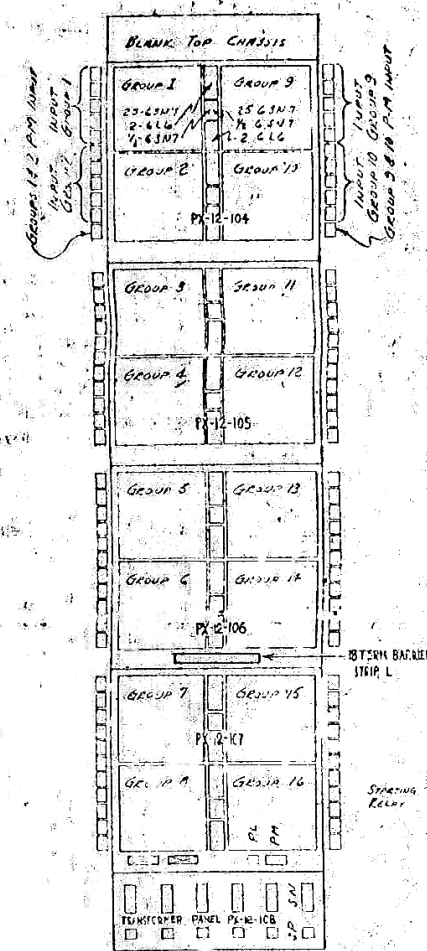
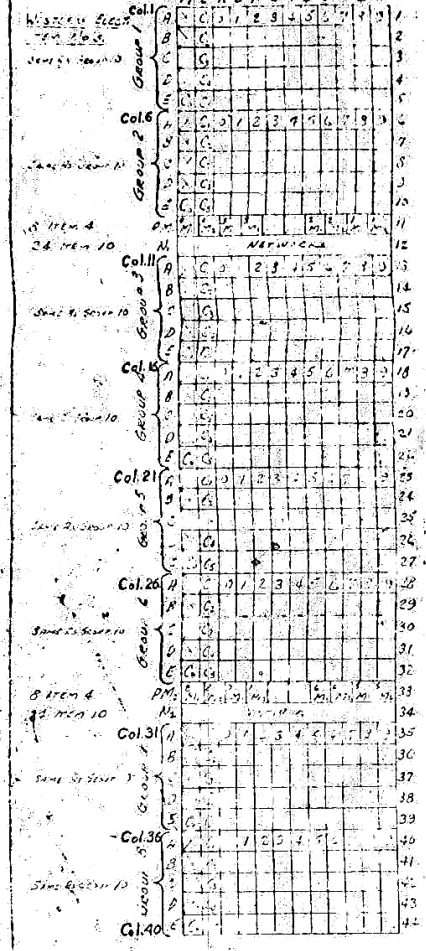


PANEL 1 FRONT PANEL
(LOOKING FROM WIRING SIDE)
SEE WIRE TO 35 #13
M L N J M G P E D C B A

PANEL 2 FRONT PANEL
SEE PX-12-10

PANEL 3 - FRONT PANEL
(LOOKING FROM WIRING SIDE)
ALL WIRES TO 35 #13
M L N J M G P E D C B A



PANEL 1
RELAY STRIPS

PANEL 2
TOP CHASSIS

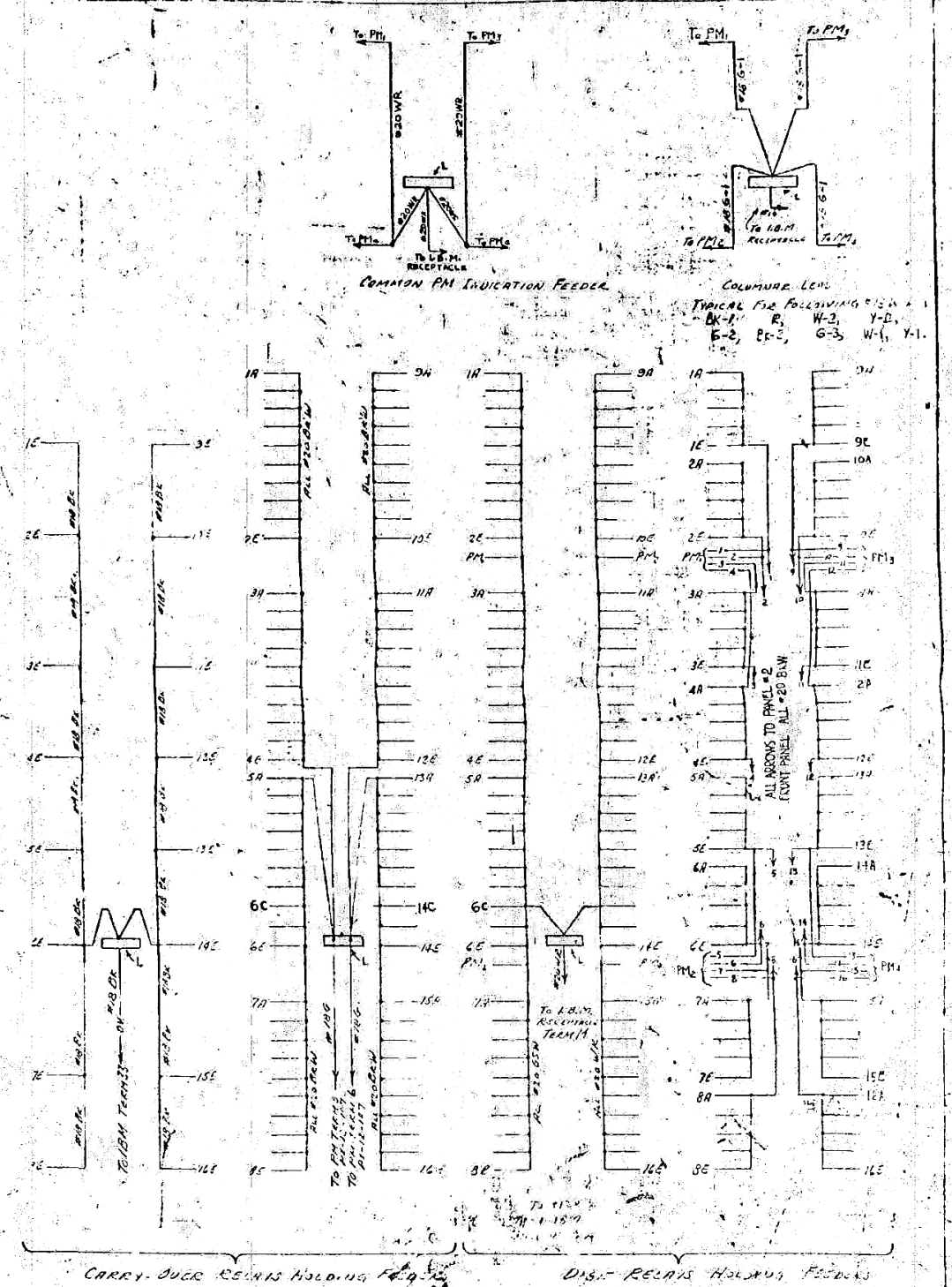
PANEL 3
RELAY STRIPS

FRONT VIEW OF PRINTED
(LOOKING FROM WIRING SIDE)

Terminal No.	Wire Color	
1	PK-GSW	DIGIT RELAYS 100771010A
2		
3	PK-W	
4	PK-BK	
5	PK-R	
6	PK-W-2	
7	PK-Y	
8	PK-G-2	
9	PK-BK-2	
10	PK-G-3	
11	PK-W-1	
12	PK-B-1	
13	PK-B	CALL RELAY - C.M.
14	PK-BK	CALL RELAY - C.M.
15	PK-DR	CALL RELAY - C.M.
16	PK-B	CARRY - 15V GROUPS 1-16
17	PK-Y	FROM N. TO SW PANEL 1
18	PK-W	FROM N. TO SW PANEL 3
19		
20		
21		
22		
23		
24		
25		
26		
27		
28		
29		
30		
31		
32		
33		
34		
35		
36		
37		
38		
39		
40		

BARrier STRIP L

NOTE:
TERMINALS ARE NUMBERED FROM LEFT TO RIGHT.



CARRY-OVER RELAYS HOLDING FEEDERS

DISK RELAYS HOLDING FEEDERS

REVISIONS
1. Carry-over and disk relay holders
2. Network W.E. 155 terminal strips
3. Law released by Jones Sine L
4. Panel 1 - front panel wiring now
5. done on drawings PX-12-10
6. M.L.E. 10/15/54

MOORE SCHOOL OF ELECTRICAL ENGINEERING
UNIVERSITY OF PENNSYLVANIA

PRINTER INTERCONNECTION W. R. 15

DESIGNED BY: [Signature]
CHECKED BY: [Signature]
APPROVED BY: [Signature]

DATE: 26, 1954

PX-12-102