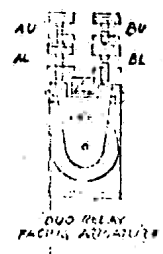


NOT RECOMMENDED. OVERFLOW WILL VARY WITH OIL VISCOSITY AND MECHANICAL FRICTION. CAPS MUST BE OILED WITH MACHINE OILS 30W, 40, AND 60. OIL IS 1/2 INCH.

BY THE CARETAKERS OF THE ENGINE, THE FOLLOWING WIRE GAUGES SHOULD BE USED:
 20 AWG - 100% COPPER
 22 AWG - 100% COPPER
 24 AWG - 100% COPPER
 26 AWG - 100% COPPER



CAP LOCATION CHART

NO.	TYPE	VAL.	NO.	TYPE	VAL.
1	3C	10	10	3C	10
2	3C	10	11	3C	10
3	3C	10	12	3C	10
4	3C	10	13	3C	10
5	3C	10	14	3C	10
6	3C	10	15	3C	10
7	3C	10	16	3C	10
8	3C	10	17	3C	10
9	3C	10	18	3C	10
10	3C	10	19	3C	10
11	3C	10	20	3C	10
12	3C	10	21	3C	10
13	3C	10	22	3C	10
14	3C	10	23	3C	10
15	3C	10	24	3C	10
16	3C	10	25	3C	10
17	3C	10	26	3C	10
18	3C	10	27	3C	10
19	3C	10	28	3C	10
20	3C	10	29	3C	10
21	3C	10	30	3C	10
22	3C	10	31	3C	10
23	3C	10	32	3C	10
24	3C	10	33	3C	10
25	3C	10	34	3C	10
26	3C	10	35	3C	10
27	3C	10	36	3C	10
28	3C	10	37	3C	10
29	3C	10	38	3C	10
30	3C	10	39	3C	10
31	3C	10	40	3C	10
32	3C	10	41	3C	10
33	3C	10	42	3C	10
34	3C	10	43	3C	10
35	3C	10	44	3C	10
36	3C	10	45	3C	10
37	3C	10	46	3C	10
38	3C	10	47	3C	10
39	3C	10	48	3C	10
40	3C	10	49	3C	10
41	3C	10	50	3C	10
42	3C	10	51	3C	10
43	3C	10	52	3C	10
44	3C	10	53	3C	10
45	3C	10	54	3C	10
46	3C	10	55	3C	10
47	3C	10	56	3C	10
48	3C	10	57	3C	10
49	3C	10	58	3C	10
50	3C	10	59	3C	10
51	3C	10	60	3C	10
52	3C	10	61	3C	10
53	3C	10	62	3C	10
54	3C	10	63	3C	10
55	3C	10	64	3C	10
56	3C	10	65	3C	10
57	3C	10	66	3C	10
58	3C	10	67	3C	10
59	3C	10	68	3C	10
60	3C	10	69	3C	10
61	3C	10	70	3C	10
62	3C	10	71	3C	10
63	3C	10	72	3C	10
64	3C	10	73	3C	10
65	3C	10	74	3C	10
66	3C	10	75	3C	10
67	3C	10	76	3C	10
68	3C	10	77	3C	10
69	3C	10	78	3C	10
70	3C	10	79	3C	10
71	3C	10	80	3C	10
72	3C	10	81	3C	10
73	3C	10	82	3C	10
74	3C	10	83	3C	10
75	3C	10	84	3C	10
76	3C	10	85	3C	10
77	3C	10	86	3C	10
78	3C	10	87	3C	10
79	3C	10	88	3C	10
80	3C	10	89	3C	10
81	3C	10	90	3C	10
82	3C	10	91	3C	10
83	3C	10	92	3C	10
84	3C	10	93	3C	10
85	3C	10	94	3C	10
86	3C	10	95	3C	10
87	3C	10	96	3C	10
88	3C	10	97	3C	10
89	3C	10	98	3C	10
90	3C	10	99	3C	10
91	3C	10	100	3C	10

RELAY LOCATION CHART

RELAY NO.	TYPE	VAL.	RELAY NO.	TYPE	VAL.
1	3C	10	11	3C	10
2	3C	10	12	3C	10
3	3C	10	13	3C	10
4	3C	10	14	3C	10
5	3C	10	15	3C	10
6	3C	10	16	3C	10
7	3C	10	17	3C	10
8	3C	10	18	3C	10
9	3C	10	19	3C	10
10	3C	10	20	3C	10
11	3C	10	21	3C	10
12	3C	10	22	3C	10
13	3C	10	23	3C	10
14	3C	10	24	3C	10
15	3C	10	25	3C	10
16	3C	10	26	3C	10
17	3C	10	27	3C	10
18	3C	10	28	3C	10
19	3C	10	29	3C	10
20	3C	10	30	3C	10
21	3C	10	31	3C	10
22	3C	10	32	3C	10
23	3C	10	33	3C	10
24	3C	10	34	3C	10
25	3C	10	35	3C	10
26	3C	10	36	3C	10
27	3C	10	37	3C	10
28	3C	10	38	3C	10
29	3C	10	39	3C	10
30	3C	10	40	3C	10
31	3C	10	41	3C	10
32	3C	10	42	3C	10
33	3C	10	43	3C	10
34	3C	10	44	3C	10
35	3C	10	45	3C	10
36	3C	10	46	3C	10
37	3C	10	47	3C	10
38	3C	10	48	3C	10
39	3C	10	49	3C	10
40	3C	10	50	3C	10
41	3C	10	51	3C	10
42	3C	10	52	3C	10
43	3C	10	53	3C	10
44	3C	10	54	3C	10
45	3C	10	55	3C	10
46	3C	10	56	3C	10
47	3C	10	57	3C	10
48	3C	10	58	3C	10
49	3C	10	59	3C	10
50	3C	10	60	3C	10
51	3C	10	61	3C	10
52	3C	10	62	3C	10
53	3C	10	63	3C	10
54	3C	10	64	3C	10
55	3C	10	65	3C	10
56	3C	10	66	3C	10
57	3C	10	67	3C	10
58	3C	10	68	3C	10
59	3C	10	69	3C	10
60	3C	10	70	3C	10
61	3C	10	71	3C	10
62	3C	10	72	3C	10
63	3C	10	73	3C	10
64	3C	10	74	3C	10
65	3C	10	75	3C	10
66	3C	10	76	3C	10
67	3C	10	77	3C	10
68	3C	10	78	3C	10
69	3C	10	79	3C	10
70	3C	10	80	3C	10
71	3C	10	81	3C	10
72	3C	10	82	3C	10
73	3C	10	83	3C	10
74	3C	10	84	3C	10
75	3C	10	85	3C	10
76	3C	10	86	3C	10
77	3C	10	87	3C	10
78	3C	10	88	3C	10
79	3C	10	89	3C	10
80	3C	10	90	3C	10
81	3C	10	91	3C	10
82	3C	10	92	3C	10
83	3C	10	93	3C	10
84	3C	10	94	3C	10
85	3C	10	95	3C	10
86	3C	10	96	3C	10
87	3C	10	97	3C	10
88	3C	10	98	3C	10
89	3C	10	99	3C	10
90	3C	10	100	3C	10

CIRCUIT DIAGRAM

NO.	TYPE	VAL.	NO.	TYPE	VAL.
1	3C	10	11	3C	10
2	3C	10	12	3C	10
3	3C	10	13	3C	10
4	3C	10	14	3C	10
5	3C	10	15	3C	10
6	3C	10	16	3C	10
7	3C	10	17	3C	10
8	3C	10	18	3C	10
9	3C	10	19	3C	10
10	3C	10	20	3C	10
11	3C	10	21	3C	10
12	3C	10	22	3C	10
13	3C	10	23	3C	10
14	3C	10	24	3C	10
15	3C	10	25	3C	10
16	3C	10	26	3C	10
17	3C	10	27	3C	10
18	3C	10	28	3C	10
19	3C	10	29	3C	10
20	3C	10	30	3C	10
21	3C	10	31	3C	10
22	3C	10	32	3C	10
23	3C	10	33	3C	10
24	3C	10	34	3C	10
25	3C	10	35	3C	10
26	3C	10	36	3C	10
27	3C	10	37	3C	10
28	3C	10	38	3C	10
29	3C	10	39	3C	10
30	3C	10	40	3C	10
31	3C	10	41	3C	10
32	3C	10	42	3C	10
33	3C	10	43	3C	10
34	3C	10	44	3C	10
35	3C	10	45	3C	10
36	3C	10	46	3C	10
37	3C	10	47	3C	10
38	3C	10	48	3C	10
39	3C	10	49	3C	10
40	3C	10	50	3C	10
41	3C	10	51	3C	10
42	3C	10	52	3C	10
43	3C	10	53	3C	10
44	3C	10	54	3C	10
45	3C	10	55	3C	10
46	3C	10	56	3C	10
47	3C	10	57	3C	10
48	3C	10	58	3C	10
49	3C	10	59	3C	10
50	3C	10	60	3C	10
51	3C	10	61	3C	10
52	3C	10	62	3C	10
53	3C	10	63	3C	10
54	3C	10	64	3C	10
55	3C	10	65	3C	10
56	3C	10	66	3C	10
57	3C	10	67	3C	10
58	3C	10	68	3C	10
59	3C	10	69	3C	10
60	3C	10	70	3C	10
61	3C	10	71	3C	10
62	3C	10	72	3C	10
63	3C	10	73	3C	10
64	3C	10	74	3C	10
65	3C	10	75	3C	10
66	3C	10	76	3C	10
67	3C	10	77	3C	10
68	3C	10	78	3C	10
69	3C	10	79	3C	10
70	3C	10	80	3C	1