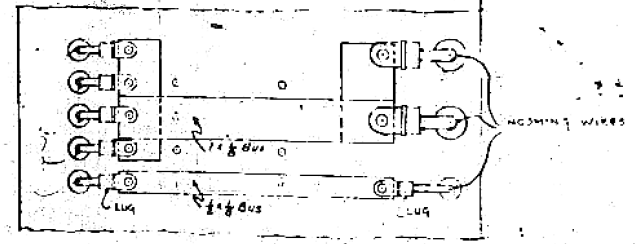
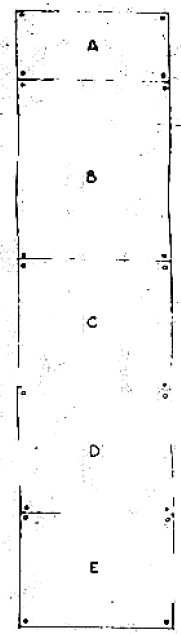


(B)

(A)



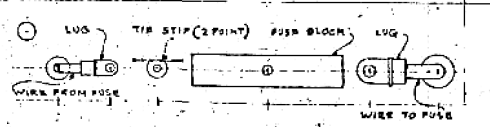
MOUNTING FOR ZERO VOLTAGES - PANEL-E



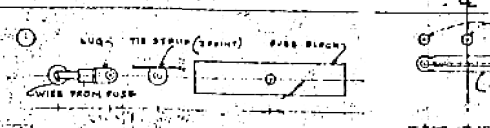
ARRANGEMENT OF PANELS IN CABINET

**SCHEDULE OF SCREW SIZES**

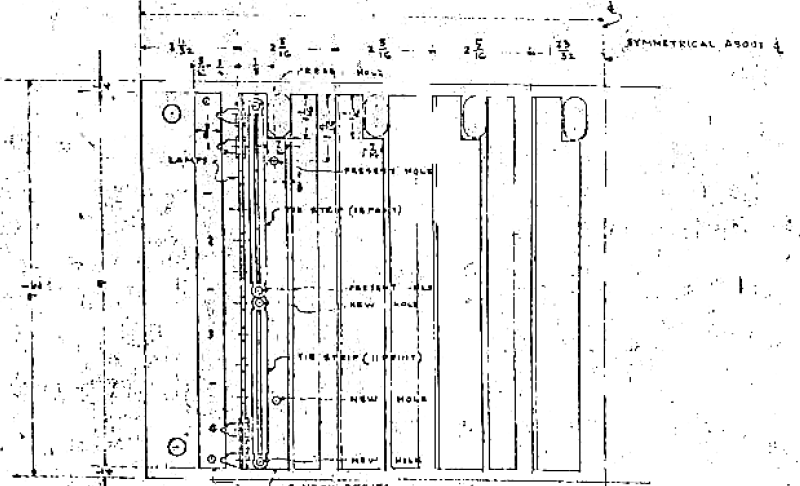
- FOR PANELS 20 LUGS USE 0-22 R.H.M.S. 1/16" DIA.
- FOR PANELS 20 LUGS USE 0-22 R.H.M.S. 1/16" DIA.
- TIE POINTS 0-22 R.H.M.S. 1/16" DIA.
- NEON NUMBER PLATE 0-22 R.H.M.S. 1/16" DIA.
- PUSH BLOCKS 0-22 R.H.M.S. 1/16" DIA.
- NEON TIE STRIPS 0-22 R.H.M.S. 1/16" DIA.
- NEON STRIPS 0-22 R.H.M.S. 1/16" DIA.
- PANEL CORNERS 3/16" HEX. HD. N.S. 1/16" DIA.



DETAIL OF MOUNTING - PANELS C-D-E



DETAIL OF MOUNTING - PANEL-A



DETAIL OF MOUNTING - PANEL-A

SEE DETAIL FOR MOUNTING OF ZERO VOLTAGES

6 BOTTOM ROWS OF HOLES PROVIDED FOR SPARE CIRCUITS

NOTE: FOR WIRE SIZES SEE DWG. PX-13-102

NOTE: ALL DIMENSIONS ARE IN INCHES

MOORE SCHOOL OF ELECTRICAL ENGINEERING  
UNIVERSITY OF PENNSYLVANIA

**FUSE PANELS**

|             |         |             |                     |
|-------------|---------|-------------|---------------------|
| DATE        | REVISED | BY          | CHKD.               |
| 4-11-45     |         | J. L. Moore |                     |
| DRAWN BY    |         |             | SCALE               |
| A. J. Moore |         |             | 1/2" = 1" FULL SIZE |
| CHECKED BY  |         |             |                     |
| J. L. Moore |         |             |                     |
| APPROVED BY |         |             |                     |
| J. L. Moore |         |             |                     |
| PROJECT NO. |         |             | PX-13-213           |

REVISIONS  
2130 10 1/2" X 10 1/2" X 10 1/2"  
P. 005 REVISED  
9-26-45