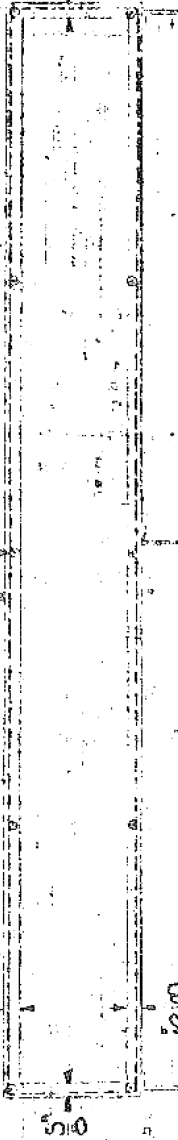


MOORE SCHOOL OF ELECTRICAL ENGINEERING  
UNIVERSITY OF PENNSYLVANIA

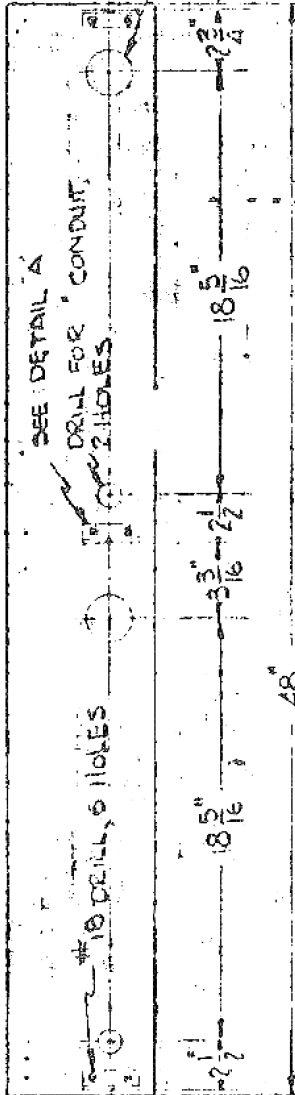
5-32 TAP, 10 HOLES TO SUIT COVER.



SEE DETAIL 'A'

DRILL FOR CONDUIT

DRILL FOR 2 HOLES



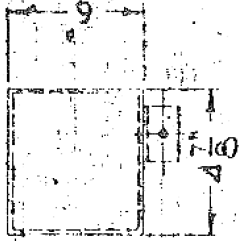
TROUGH

#18 DRILL, 10 HOLES

4 EQUAL SPACES - TOTAL 47.3"  
47.8

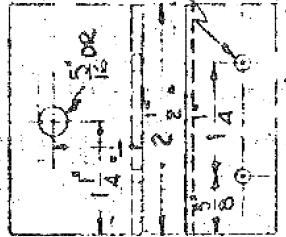
COVER

MATERIAL #14 GAUGE SHEET STEEL  
FINISH FLAT BLACK  
REFERENCE DWG PX-13-211



DRILL FOR 2 HOLES  
2 HOLES

1 X 1/2" ANGLE



DETAIL 'A' 3 REQ'D

DRAWN BY E.H.C. 12 SEP 46

CHECKED BY J.F.K. 10/14/46

APPROVED BY

CONDENSER CABINET TROUGH

SCALE 1/2" = 1'-0"

PX-13-216