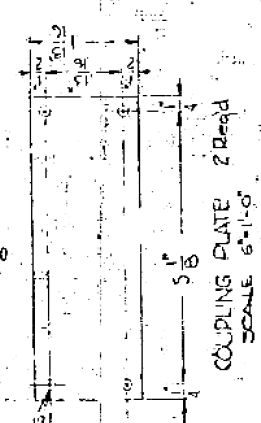


MOORE SCHOOL OF ELECTRICAL ENGINEERING UNIVERSITY OF PENNSYLVANIA		POWER SUPPLY WIRING GUTTER	
SCALE: 3/4" = 1'-0"	MATERIAL: 12 GA. SHEET STEEL FINISH: PLY. SWISS-BRAND "BLACK"	APPROVED BY	PX-13-217
DRAWN BY E. H. C.	CHECKED BY J. C. Connolly	APPROVED BY	
12 SEP 46	9 OCT 46		



ALTERATIONS
1
2
3
4
5
6
7
8
9
10
11
12
13
14
15
16
17
18
19
20
21
22
23
24
25
26
27
28
29
30
31
32
33
34
35
36
37
38
39
40