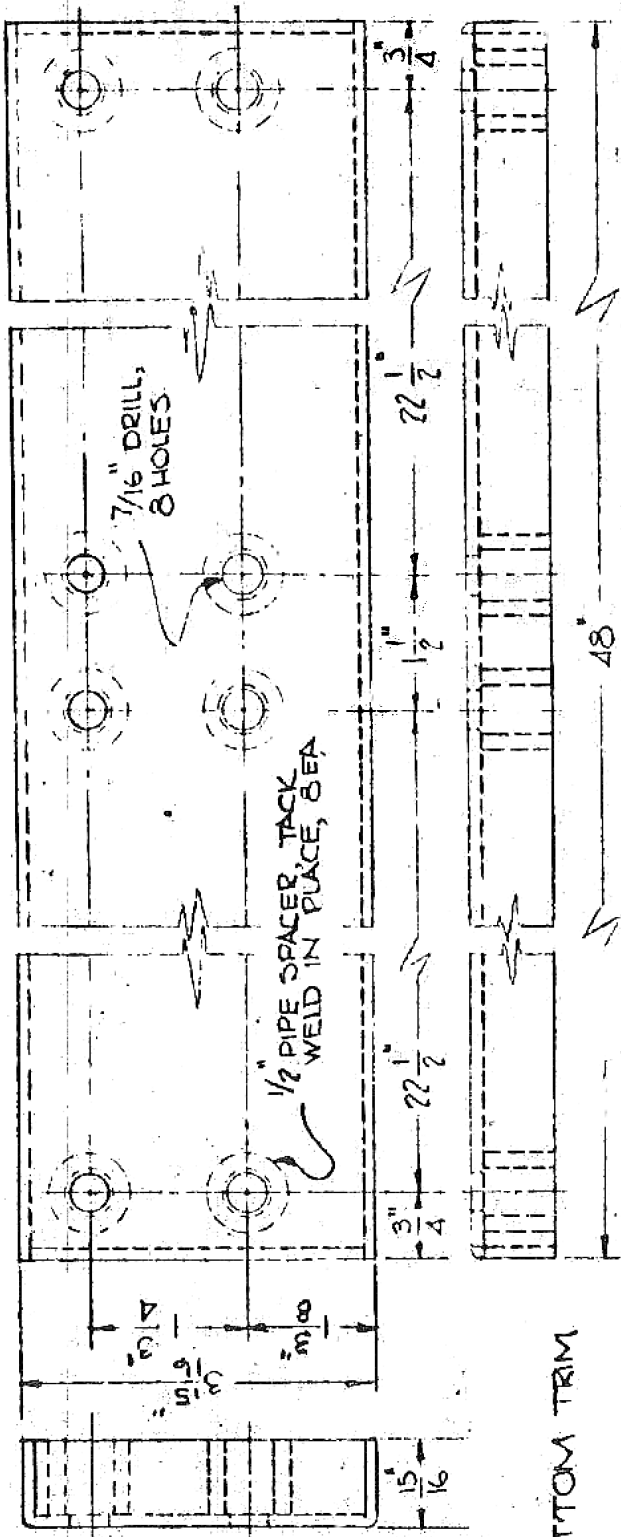
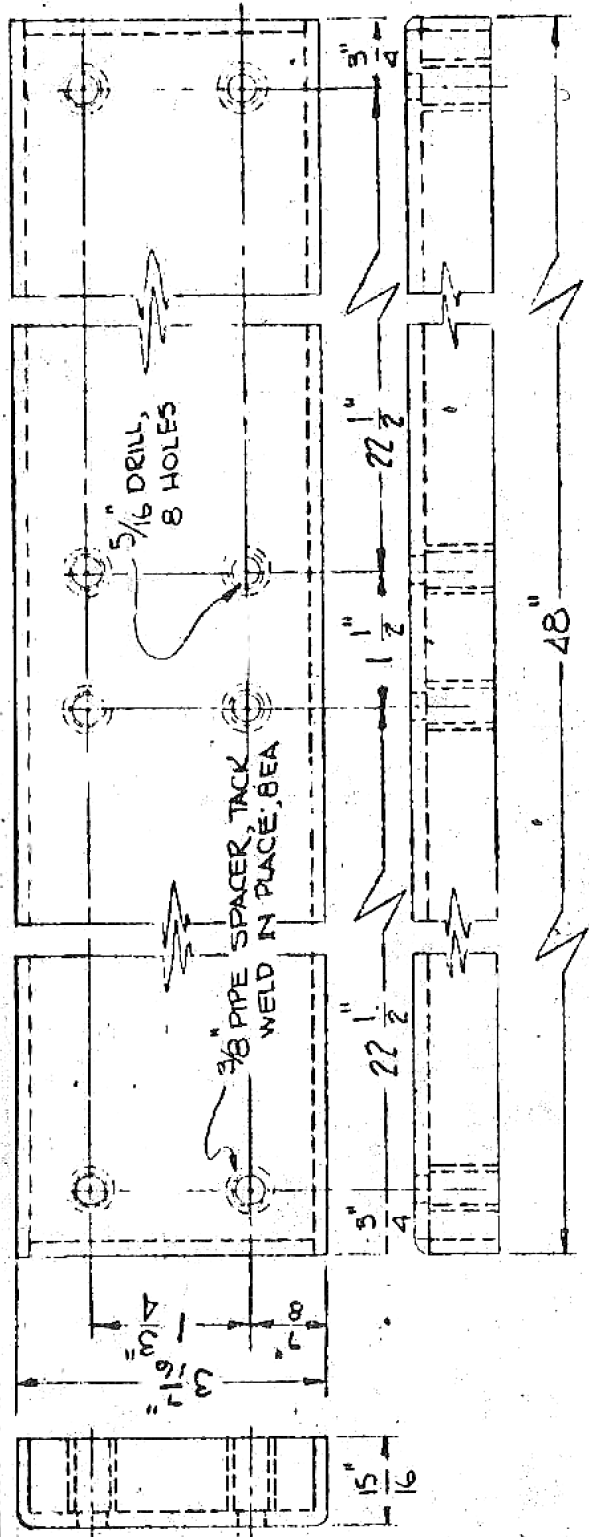


MOORE SCHOOL OF ELECTRICAL ENGINEERING
UNIVERSITY OF PENNSYLVANIA



BOTTOM TRIM



TOP TRIM

SCALE: 6" = 1'-0"
MATERIAL: 12 GA. STEEL
FINISH: BLACK WRINKLE

DRAWN BY EHC OCT 1942
CHECKED BY JAK 10/11/42
APPROVED BY

CONDENSER CABINET
TOP & BOTTOM TRIM

SCALE 6" = 1'-0"
PX-13-218

DIS 2172