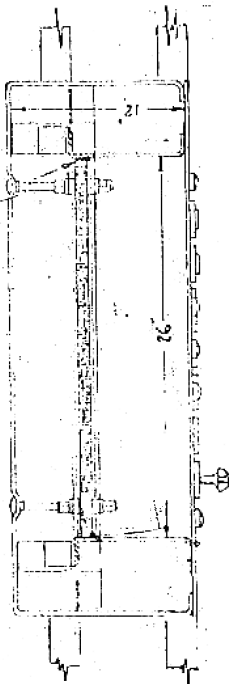
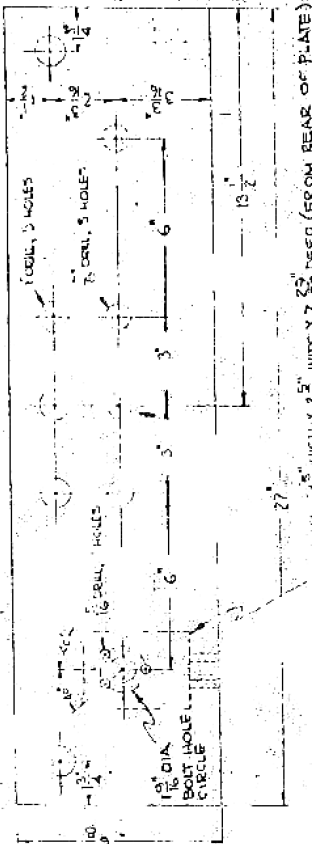


EBONY ASBESTOS PANELS MOUNTED ON LOOSE LINK HINGES

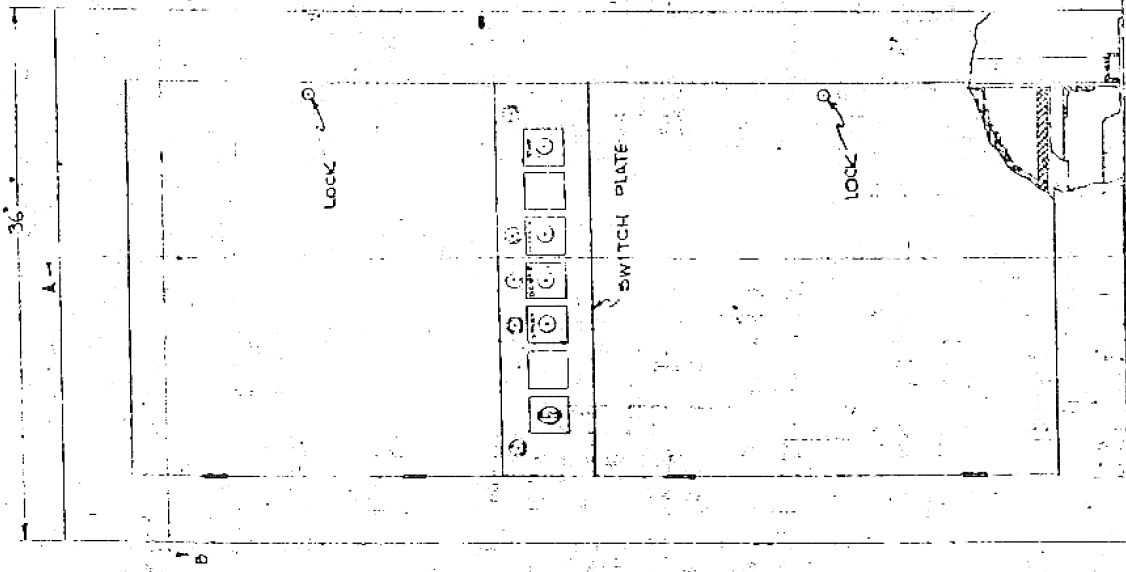


SECTION BB
SCALE: 1/2" = 1'-0"



DETAIL OF SWITCH PLATE
SCALE: 3/4" = 1'-0"

PANEL AND TWO SUPPORT BRACKETS REMAIN IN POSITION WHEN DOOR IS REMOVED



SECTION AA
SCALE: 1/2" = 1'-0"

- KEY
- EBONY ASBESTOS
- ROCK CORE
- STEEL

5" X 1/2" RECTANGULAR OPENING, WITH ROLLED EDGE, IN BOTTOM OF CABINET

ENIAC INSTALLATION
COMPUTING ANNEX - THIRD FLOOR
BALLISTIC COMPUTING LABORATORY
ABERDEEN PROVING GROUND

MOORE SCHOOL OF ELECTRICAL ENGINEERING
UNIVERSITY OF PENNSYLVANIA

DETAIL OF CONTROL PANEL No. 5

| | | | | | |
|--------------------|----------------------------|-------------|-------------|------|-----------|
| SCALE AS NOTED | UNIVERSITY OF PENNSYLVANIA | CODE | ENGINEERING | DATE | PROJECT |
| DRAWN BY J.A.C. | CHECKED BY J.A.C. | APPROVED BY | | | PX-14-110 |
| OCT 46 | 9.9.46 | | | | |