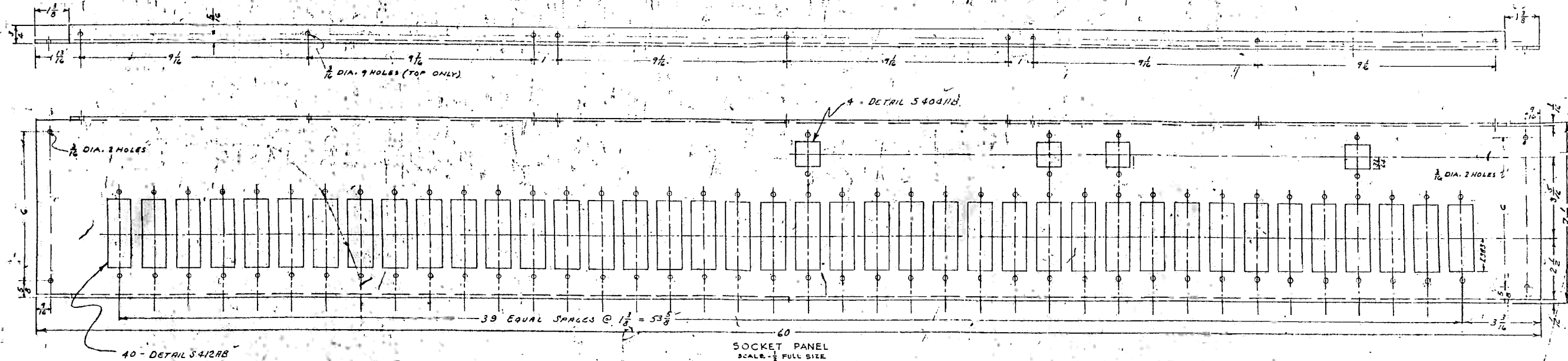
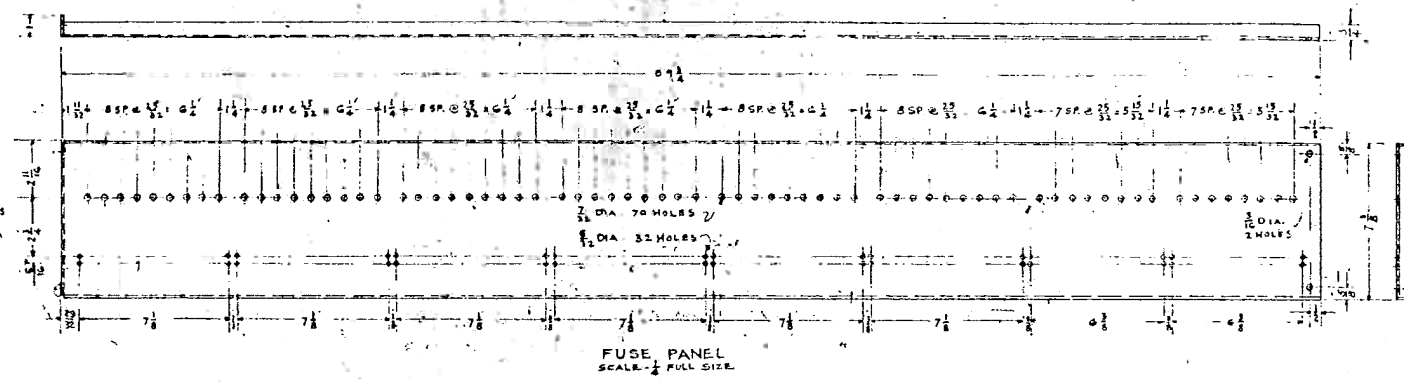


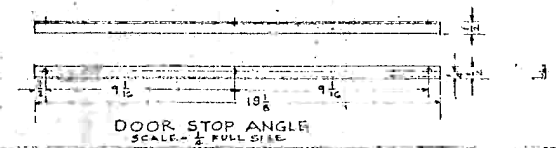
A



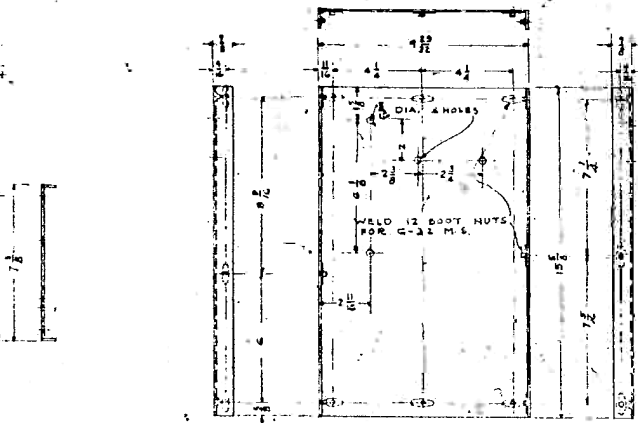
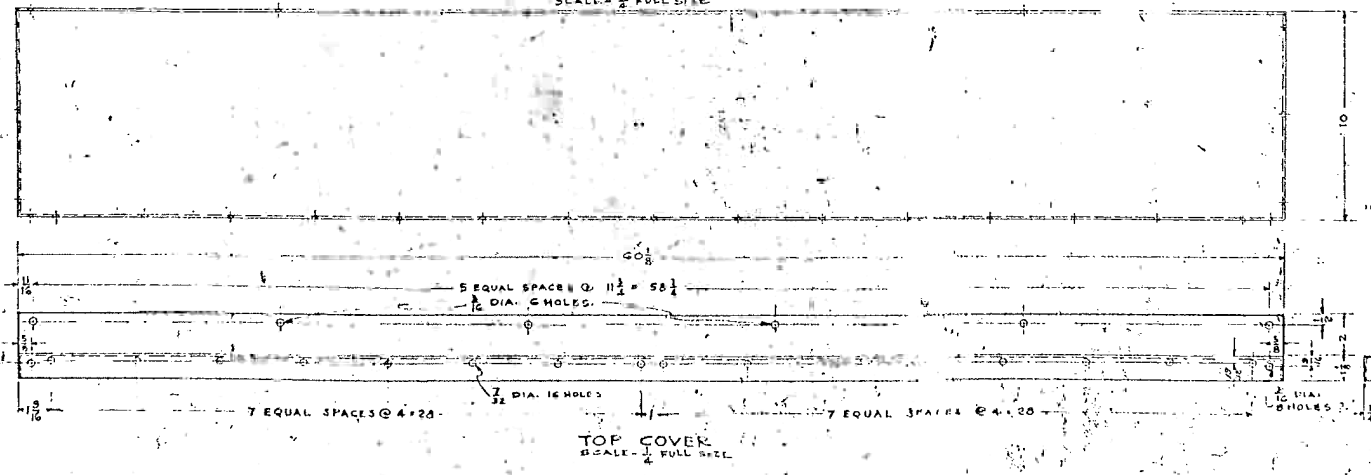
B



C

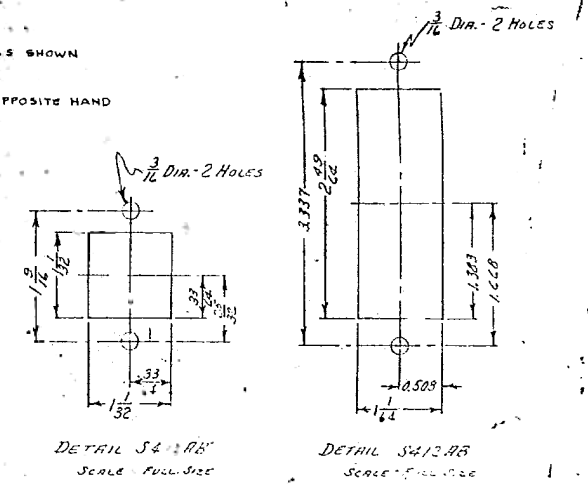


D



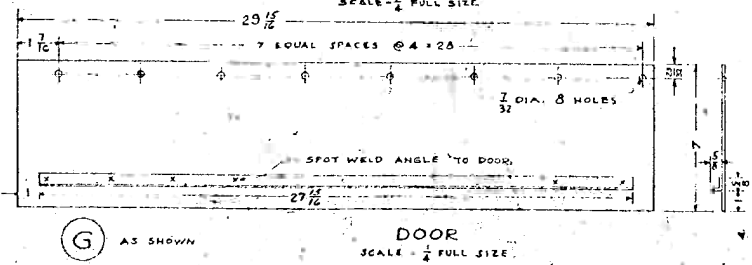
E

F



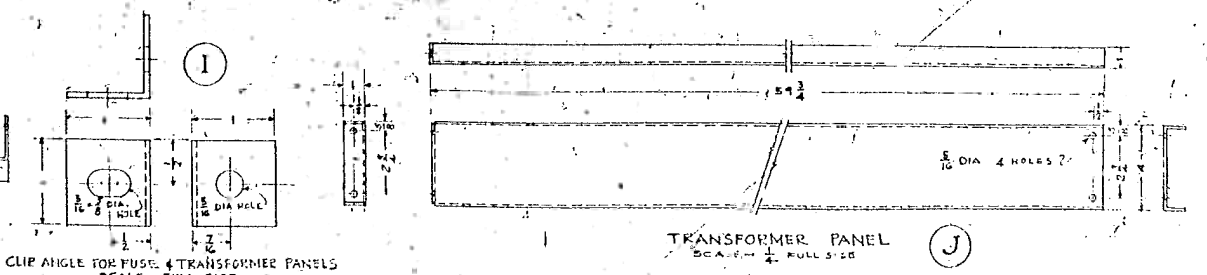
G

H



I

J



REVISIONS:
 1. 1/2" DIA. HOLES ADDED TO TOP AND BOTTOM OF PARTS (A), (B), (C), (D), (E), (F), (G), (H), (I), (J) AND (K) FOR WIRE CONNECTIONS.
 2. 1/2" DIA. HOLES ADDED TO TOP AND BOTTOM OF PARTS (A), (B), (C), (D), (E), (F), (G), (H), (I), (J) AND (K) FOR WIRE CONNECTIONS.
 3. 1/2" DIA. HOLES ADDED TO TOP AND BOTTOM OF PARTS (A), (B), (C), (D), (E), (F), (G), (H), (I), (J) AND (K) FOR WIRE CONNECTIONS.
 4. 1/2" DIA. HOLES ADDED TO TOP AND BOTTOM OF PARTS (A), (B), (C), (D), (E), (F), (G), (H), (I), (J) AND (K) FOR WIRE CONNECTIONS.
 5. 1/2" DIA. HOLES ADDED TO TOP AND BOTTOM OF PARTS (A), (B), (C), (D), (E), (F), (G), (H), (I), (J) AND (K) FOR WIRE CONNECTIONS.

VARIATIONS ON FIG. 10 DIMENSIONS
 (1) 1/2" DIA. HOLES
 (2) 1/2" DIA. HOLES

MOORE SCHOOL OF ELECTRICAL ENGINEERING
 UNIVERSITY OF CALIFORNIA
 Test II - EQUIPMENT

10/11/76
 PX