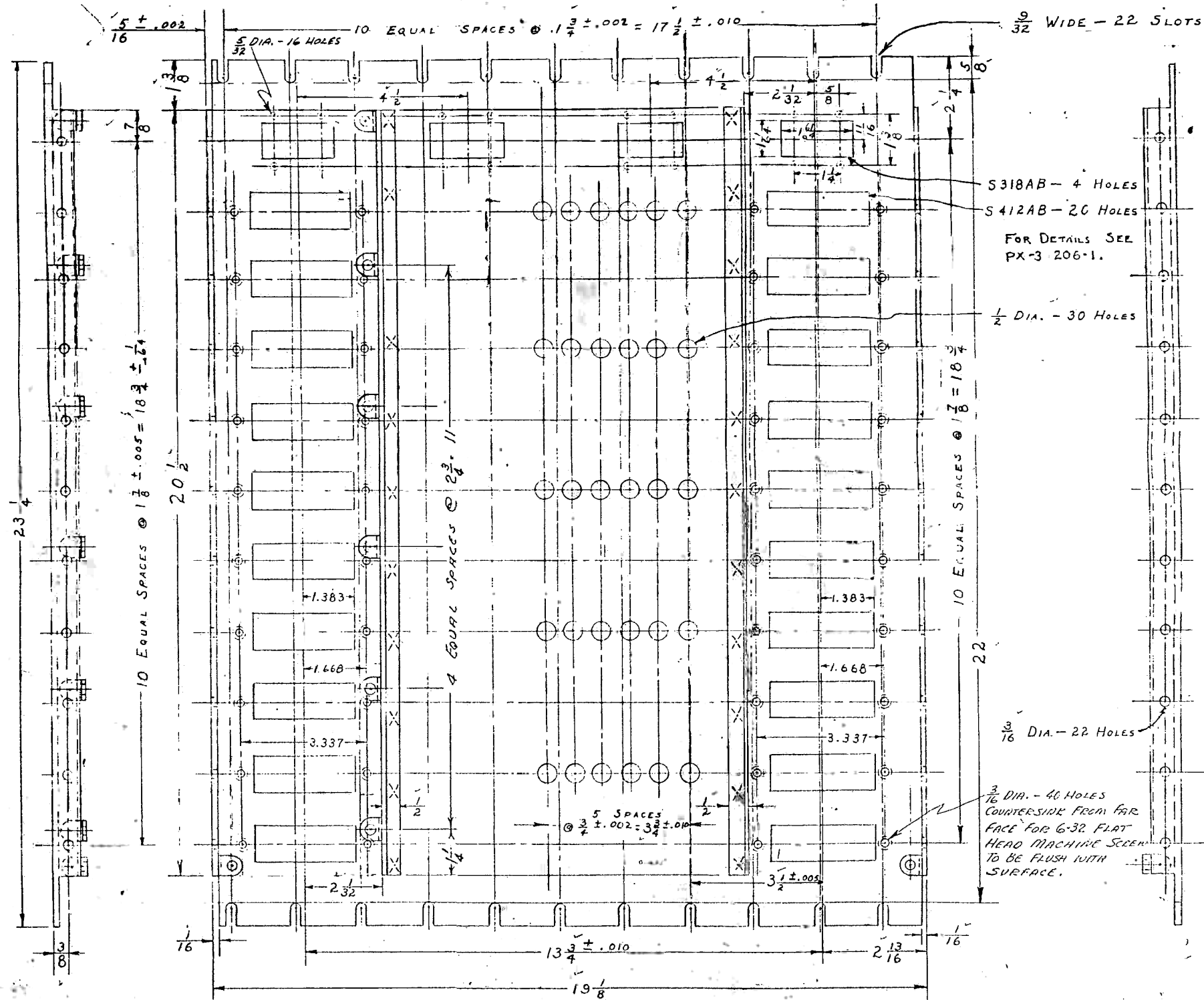


(J) As Shown.



S318AB - 4 HOLES
 S412AB - 20 HOLES
 FOR DETAILS SEE
 PX-3 206-1.

1/2 DIA. - 30 HOLES

10 EQUAL SPACES @ 1 7/8 = 18 3/4

3/16 DIA. - 22 HOLES

3/16 DIA. - 40 HOLES
 COUNTERSINK FROM FAR
 FACE FOR 6-32 FLAT
 HEAD MACHINE SCREWS
 TO BE FLUSH WITH
 SURFACE.

SPOTWELD TO CHASSIS - 2 ANGLES.
 MAXIMUM DISTANCE BETWEEN
 SPOTWELDS - 2

SPOTWELD 3/8 THICK STEEL
 GROUND LUG WITH PRO
 SECTING PART TIN-PLATED.
 MASK LUG BEFORE FINISHING.
 8 LUGS.

MA	PLANS ON	NO.	15
DATE	8-11-44	BY	
CHKD		APP	
DES		REV	
APP		FILE	
OC			

ROOK SCHOOL OF ELECTRICAL ENGINEERING
 UNIVERSITY OF PENNSYLVANIA
 STANDARD 5000 LABEL (CONT'D) FLOOR 1
 AUG. 8, 1944 8-11-44
 PX-37