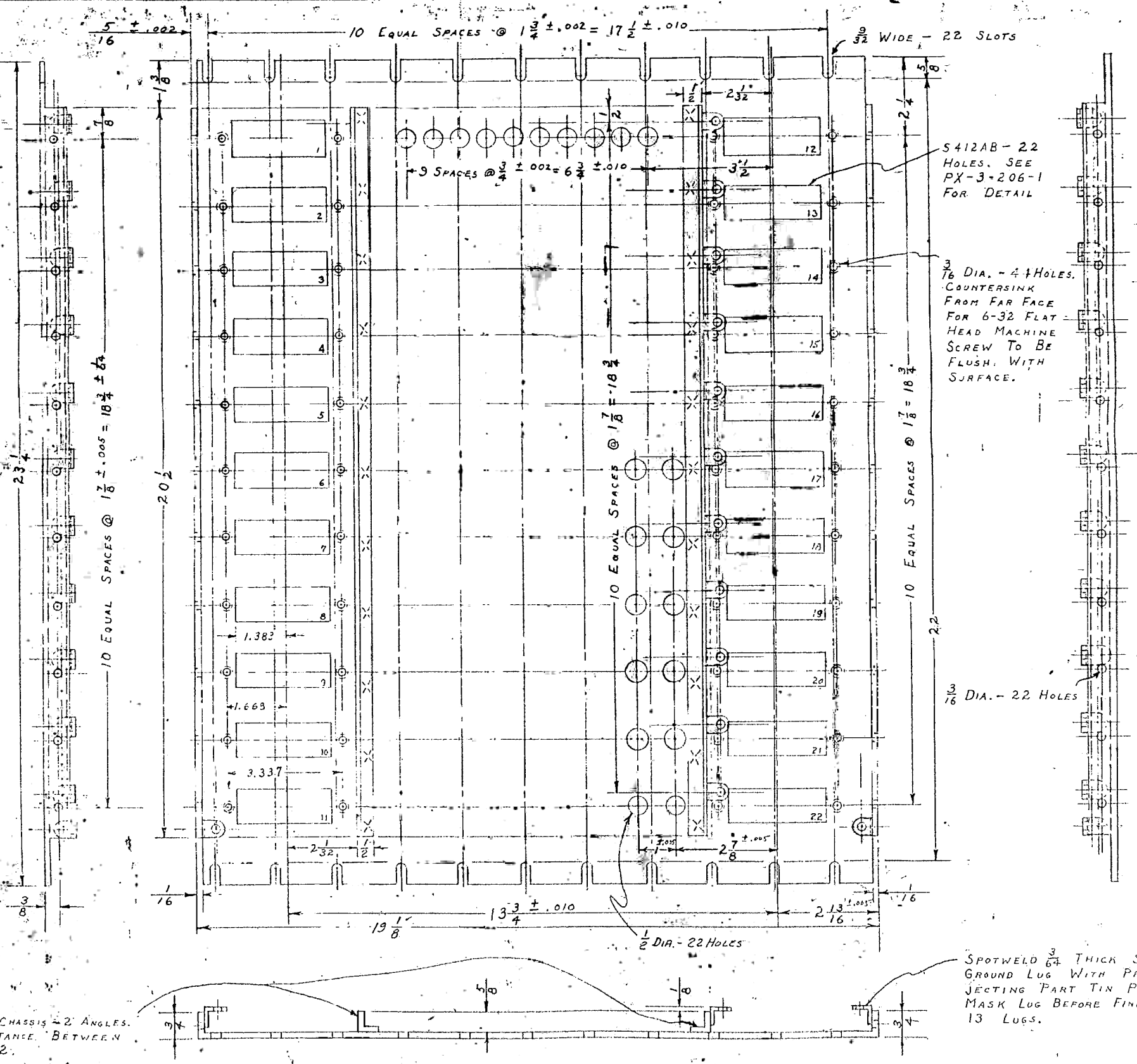


- (L) AS SHOWN, EXCEPT OMIT ALL TWENTY-TWO $\frac{1}{2}$ " INCH HOLES.
- (M) AS SHOWN, EXCEPT OMIT HOLES 11 AND 22 AND ALL TWENTY-TWO $\frac{1}{2}$ " INCH HOLES AND ADD FOUR $\frac{1}{2}$ " INCH HOLES AND ADD FOUR S412AB. SEE IX-3-206-6-M. ALSO ADD 1 EXTER GROUND LUG.
- (N) AS SHOWN
- (O) AS SHOWN EXCEPT OMIT ALL 22 $\frac{1}{2}$ " INCH DIA. HOLES AND ADD 2 S412AB. SEE PX-3-206-7-O.



S412AB - 22 HOLES. SEE PX-3-206-1 FOR DETAIL

$\frac{3}{16}$ DIA. - 4 HOLES. COUNTERSINK FROM FAR FACE FOR 6-32 FLAT HEAD MACHINE SCREW TO BE FLUSH WITH SURFACE.

$\frac{3}{16}$ DIA. - 22 HOLES

SPOTWELD TO CHASSIS - 2 ANGLES. MAXIMUM DISTANCE BETWEEN SPOTWELDS - 2.

SPOTWELD $\frac{3}{4}$ THICK STEEL GROUND LUG WITH PROTECTING PART TIN PLATED. MASK LUG BEFORE FINISHING. 13 LUGS.

1	22 Holes Min. 1/2" Dia. - 33 Holes. 1/2" Dia. - 4. 4. 4.
2	Added Overall Length Dim. of Piece. Added Width of Spotwelded Area. Added Part (O) of 1/2" Dia. - 22 Holes.

ANAPD Sop-E
 USE FIGURED DIMENSIONS
 SCALE

PX-3-206-7
 15 194