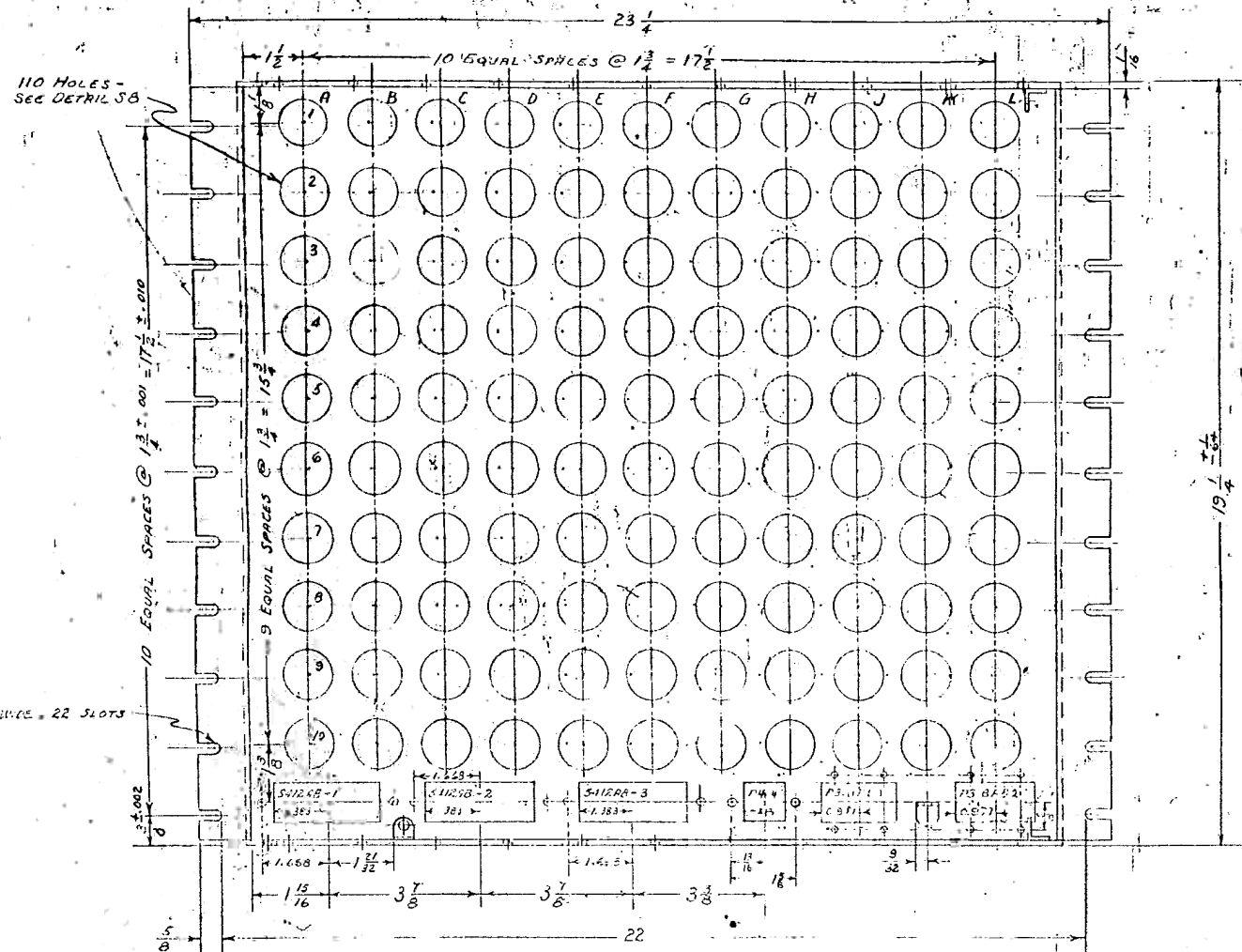


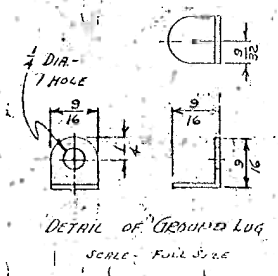
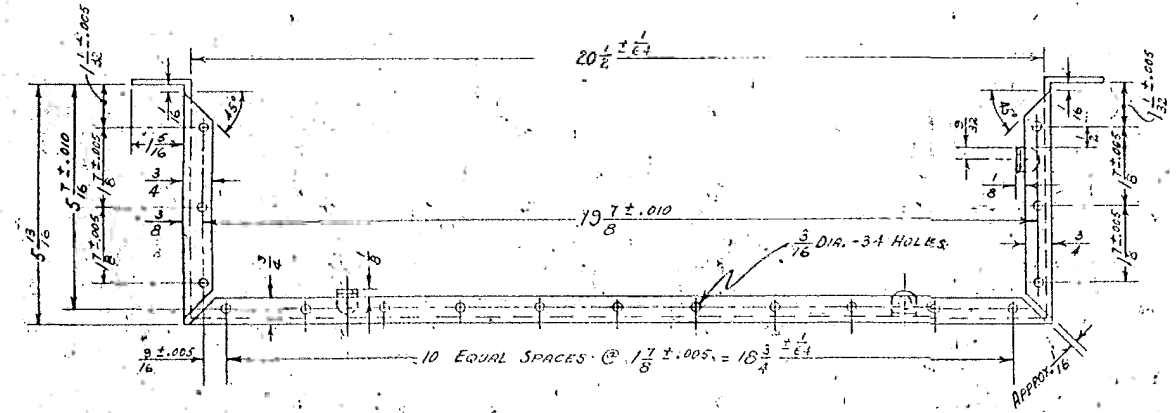
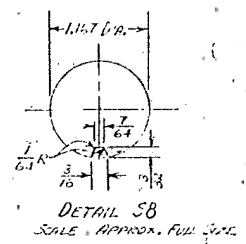
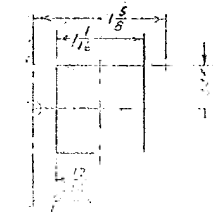
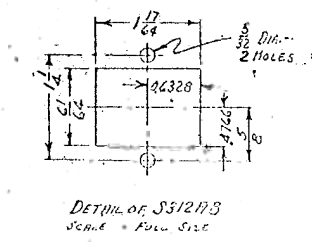
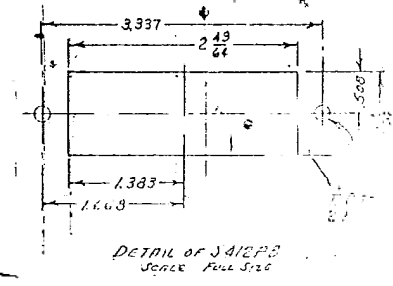
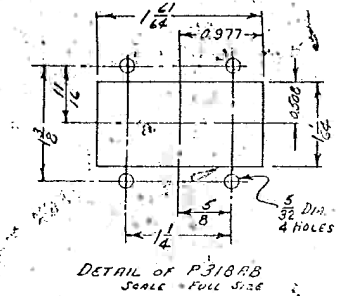
3/16 DIA. 16 HOLES - PROVIDE THESE HOLES AS FOLLOWS:

Row	Number of Holes
A	3
C	1
D	1
F	1
G	10

SEE DETAIL A-6 FOR THICK 1/4" GROUND LUGS WITH PROJECTING TABS FOR SOLDERING. MOUNT LUGS BEFORE FINISHING. (SEE DETAIL PX-3-206-1)



- (A) AS SHOWN.
- (B) SIMILAR TO A, EXCEPT OMIT S412AB-1, 2, 3, P404AB, AND P318AB-1, 2.
- (C) SIMILAR TO B, EXCEPT REPLACE OMITTED HOLES WITH ROW OF 5 G HOLES. SEE PX-3-207-2 C.
- (D) SIMILAR TO A, EXCEPT OMIT ROW 1 AND ADD TWO S312AB HOLES AT A AND ADD ALSO 2 EXTRA GROUND LUGS. SEE PX-3-207-2 D.
- (E) SIMILAR TO A, EXCEPT OMIT ROWS 1, 2, 3 AND 4. & ADD TWO P318AB HOLES. SEE PX-3-207-2 E.
- (F) SIMILAR TO A, EXCEPT OMIT ALL 110 S8 HOLES & ONE S412AB HOLE. ADD TWO P318AB. SEE PX-3-207-2 F. ADD ALSO 1 EXTRA GROUND LUG.
- (G) SIMILAR TO A, EXCEPT OMIT TWO S412AB HOLES AND ADD TWO P318AB AND ONE P404AB HOLES. ADD ALSO 1 EXTRA GROUND LUG. SEE PX-3-207-2 G.



	A	B	C	D	E	F	G
INITIATING PULSE	-	-	-	-	-	1	-
CYCLING UNIT	1	-	-	-	1	-	-
MASTER PROGRAMMER	-	-	-	1	-	-	2
FUNCTION TABLE	-	3	6	-	-	-	5
DIVIDER	+	-	1	-	-	-	1
MULTIPLIER	6	1	+	1	-	-	1
CONSTANT TRANSMITTER	1	1	2	-	-	-	1
PRINTER	1	3	-	-	-	-	1