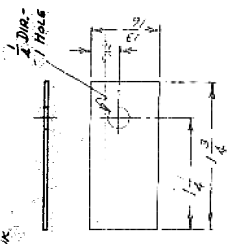
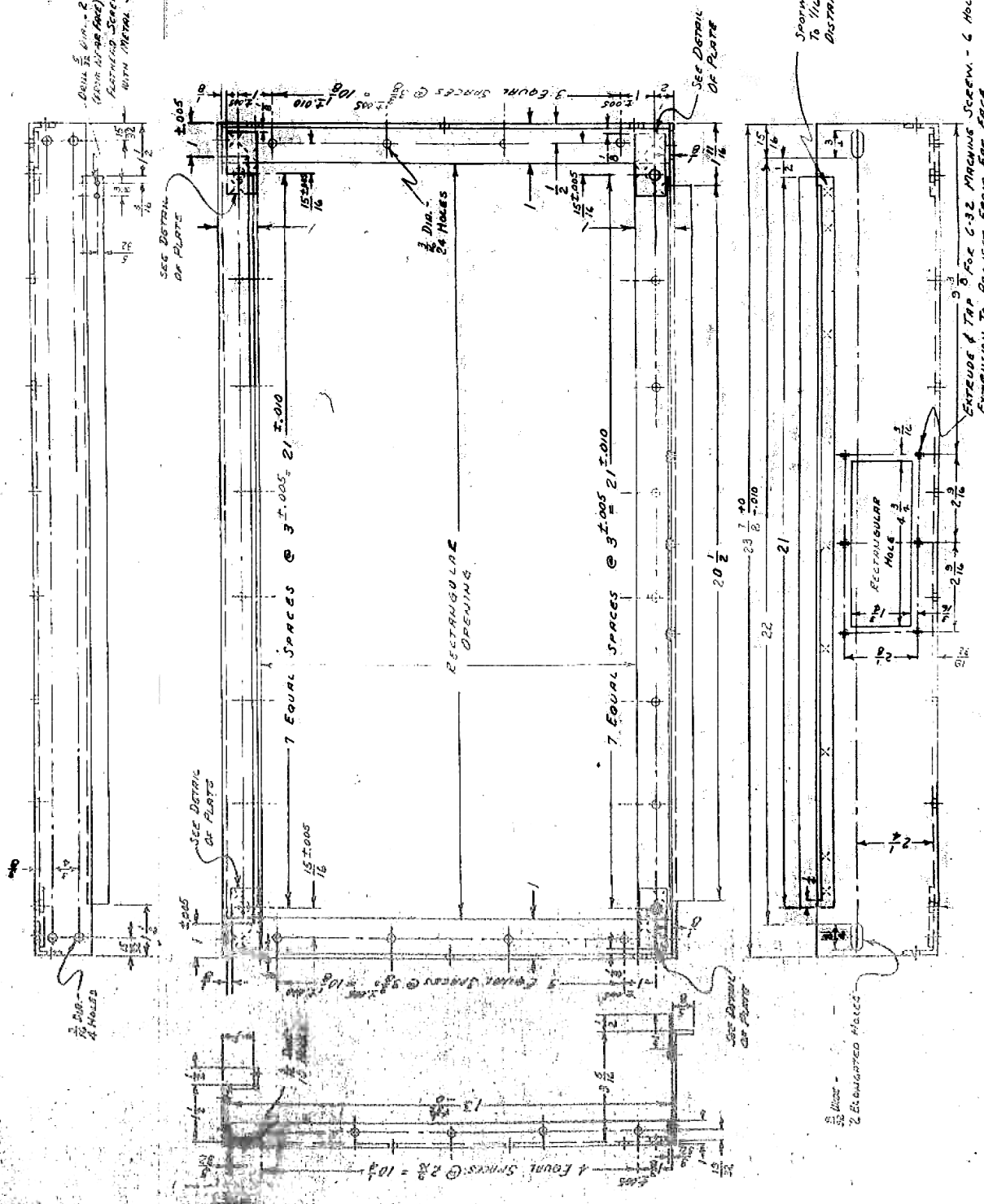


002385
51

2 Dia. 1/2" - 2 Holes, Countersink
(FROM 1/4" TO 1/2" DIA) 90° FOR 6-32
ANCHOR SCREW TO BE FLUSH
WITH METAL SURFACE.



DETAIL OF PLATE
SCALE - FULL SIZE
NOTE: 1/4 INDICATES SPOTWELD



SPOTWELDED #20 GA SHEET STEEL STRIP
TO 1/16 SHEET STEEL PLATE MAINTAINING
DISTANCE BETWEEN SPOTWELDS 3"

EXTRUDE & TAP 5/8 FOR 6-32 MACHINE SCREW - 6 HOLES
EXTENSION TO PROTECT FROM FIRE FLEE

VARIATIONS ON FINISHED DIMENSIONS
(UNLESS OTHERWISE MARKED)

BASIC DIMENSIONS	FRACTIONAL DIMENSIONS	DECIMAL DIMENSIONS
UP TO 4	± 1/64	± .005
ABOVE 4 TO 6	± 1/32	± .005
ABOVE 6 TO 24	± 1/16	± .010
ABOVE 24	± 1/8	± .015

ALL DIMENSIONS ARE IN INCHES.
USE FIGURED DIMENSIONS - DO NOT SCALE.

MOORE SCHOOL OF ELECTRICAL ENGINEERING
UNIVERSITY OF PENNSYLVANIA

HOUSING - TOP PLATE	FINISH	SCALE
MATERIAL	AWKWARD BLOCK	1/2 FULL SIZE
Drawn by:	Checked by:	Approved by:
J. Cummings	7-11-44	7-11-44
JUL 11 1944		

PX-3-212