

NOTE:

- A. PLATE WITH NO LARGE HOLES.
- B. " " 1 HOLE -
- C. " " 2 HOLES -
- D. " " 1 HOLE - $1\frac{1}{8}$ " DIA.
- E. " " 2 HOLES - $1\frac{1}{8}$ " DIA.
- F. " " 1 HOLE -
- G. " " 2 HOLES -

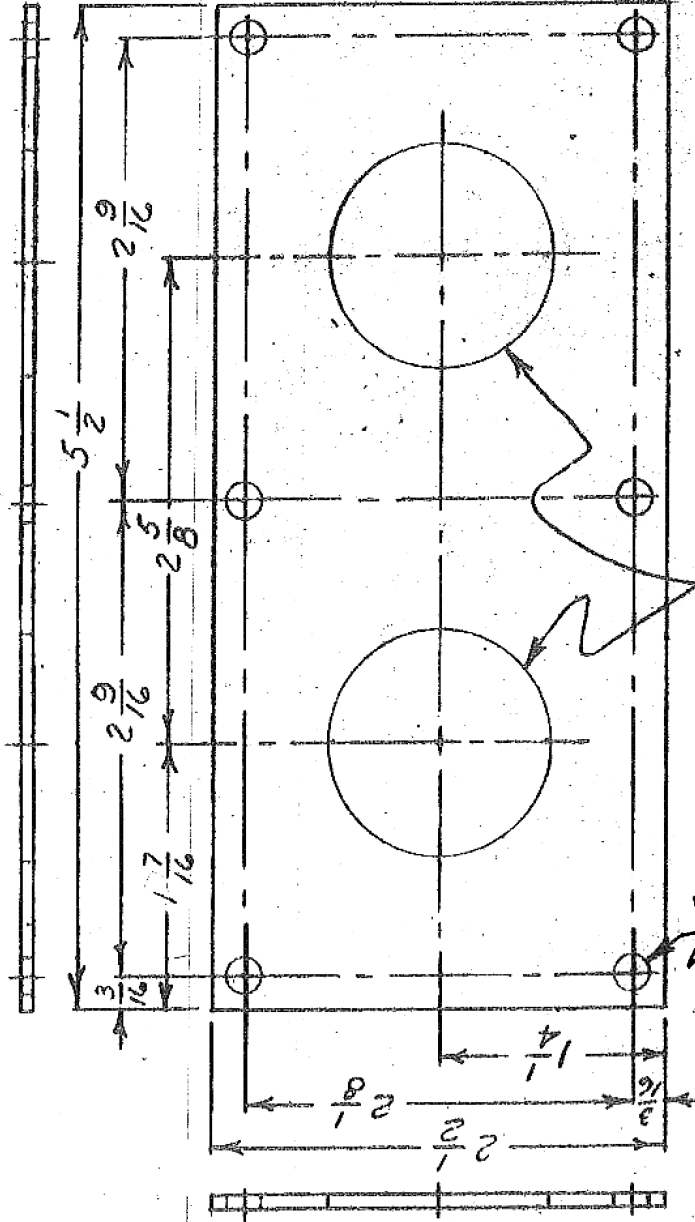
MINN. C.A. 4-67 CIV 189

PLAINTIFF'S TRIAL

EXHIBIT

No. 2189

002389



$\frac{3}{16}$ " DIA -
6 HOLES

SEE NOTES A, B, C, D, E, F, G

MOORE SCHOOL OF ELECTRICAL ENGINEERING
UNIVERSITY OF PENNSYLVANIA

HOUSING CABLE ENTRANCE PLATE

MATERIAL	FINISH	SCALE
$\frac{1}{16}$ " SHEET STEEL	MEINKELED BLACK	FULL SIZE
Drawn by: J. COMMINGS JUNE 16, 1944	Checked by: H. J. ... 7-18-44	Approved by: H. J. ... 7-18-44
PX-3-216		

VARIATIONS ON FINISHED DIMENSIONS (UNLESS OTHERWISE MARKED)		
BASIC DIMENSIONS	FRACTIONAL DIMENSIONS	DECIMAL DIMENSIONS
UP TO $\frac{1}{2}$	$\pm 1/128$	$\pm .005$
ABOVE $\frac{1}{2}$ TO 4	$\pm 1/64$	$\pm .005$
ABOVE 4 TO 24	$\pm 1/32$	$\pm .010$
ABOVE 24	$\pm 1/16$	$\pm .015$

ALL DIMENSIONS ARE IN INCHES.
USE FIGURED DIMENSIONS - DO NOT SCALE