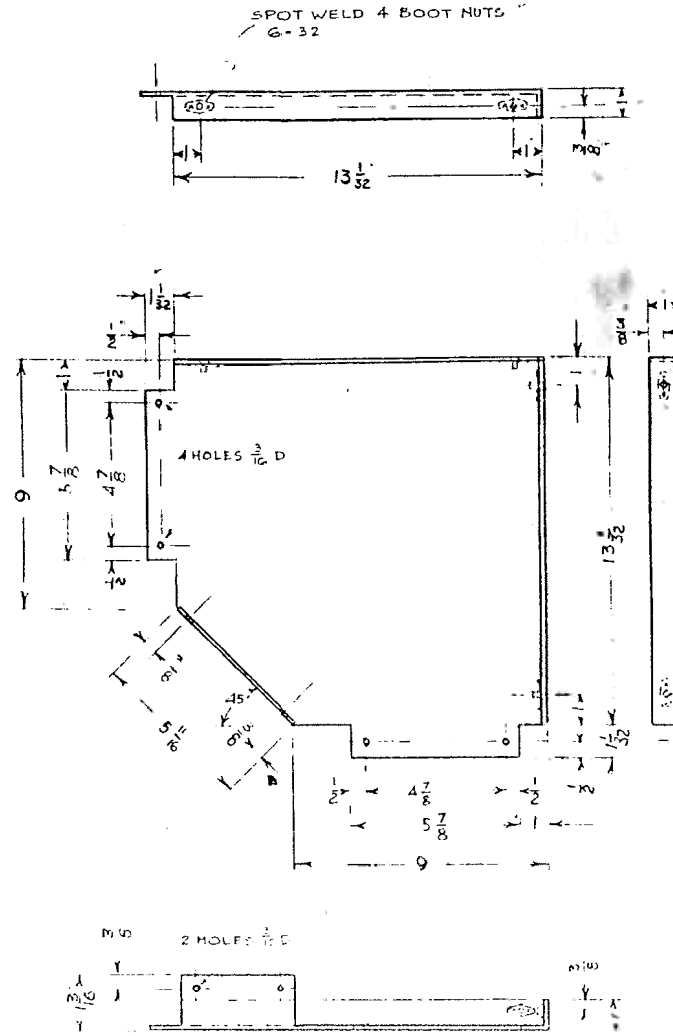
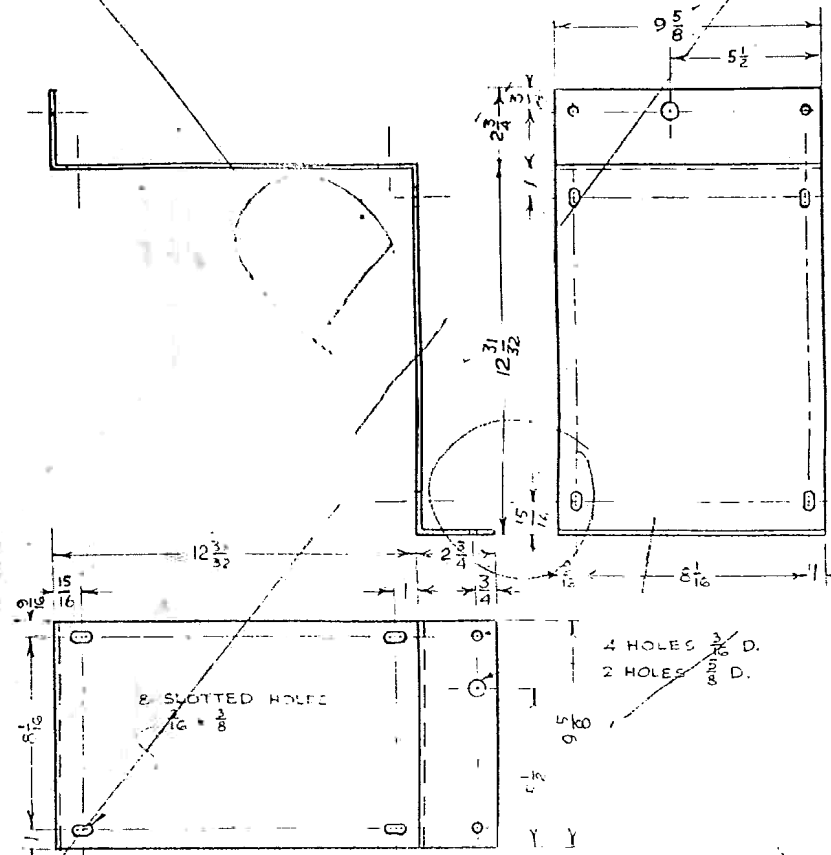


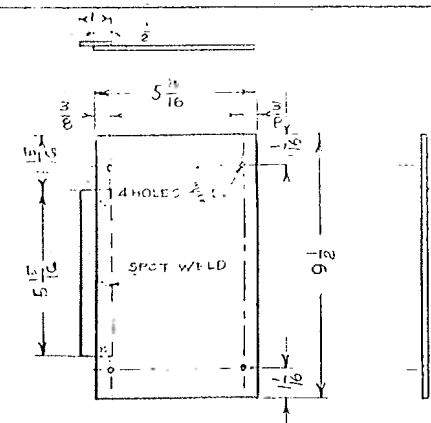
(A) TOP PLATE
For both 90° corners



(B) BOTTOM PLATE
For both 90° corners



(C) BACK PLATE
For one 90° corner



(D) FRONT PLATE
For both 90° corners

DATE	BY	CHKD	APP'D

POWER ROUGH 90° CORNER BOX

1/2 SHEET STEEL WRINKLED BLACK 1/4 FULL SIZE

JEDLSACK

FEB. 17, 1945

3/20/45

PX-3-272