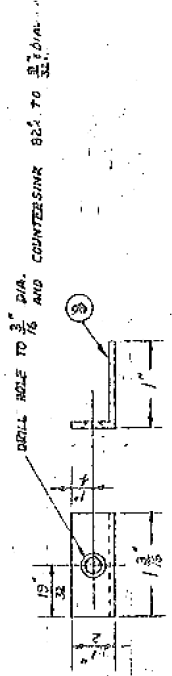
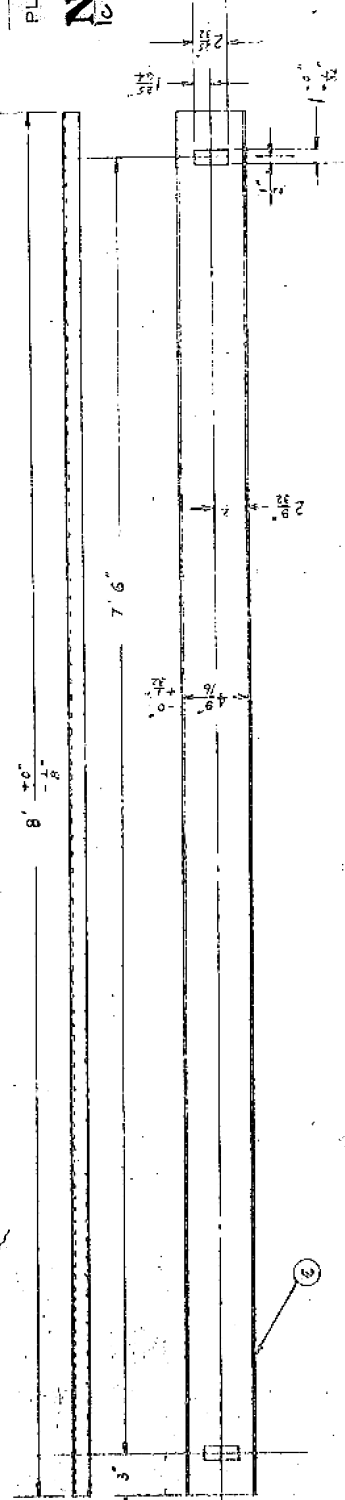
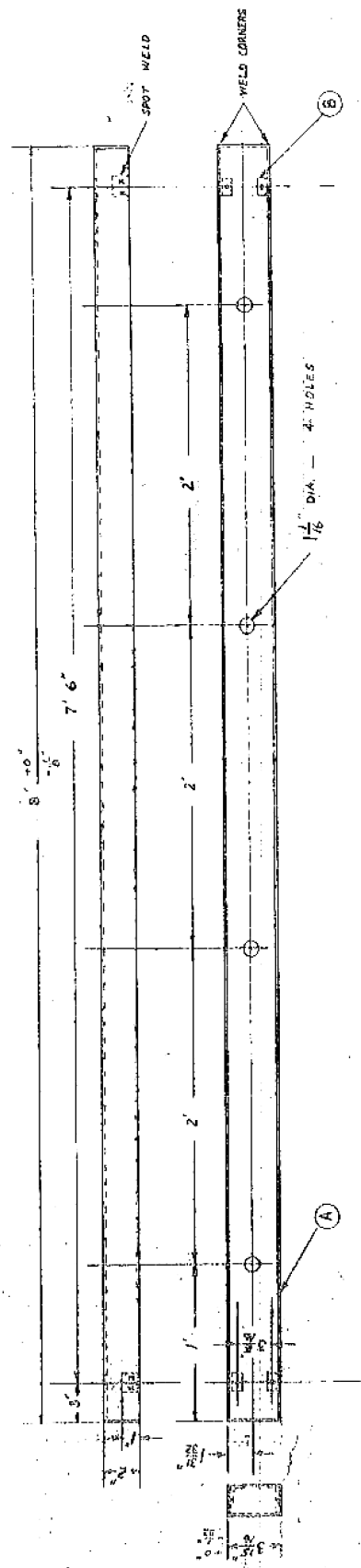


VARIATIONS ON FINISHED DIMENSIONS
(unless otherwise marked)

BASIC DIMENSIONS	FRACTIONAL DIMENSIONS	DECIMAL DIMENSIONS
UP TO 1/4"	± 1/32"	± .005"
ABOVE 1/4" TO 1/2"	± 1/64"	± .005"
ABOVE 1/2" TO 1"	± 3/32"	± .010"
ABOVE 1" TO 2"	± 1/16"	± .015"



- (A) POWER WIRE TRAY FOR RACK
- (B) FULL SCALE DETAIL DRAWING OF SOCKET BRACKET - (TO BE SPOT-WELDED TO SIDE OF TRAY)
- (C) LID FOR POWER WIRE TRAY



PLAINTIFF'S TRIAL EXHIBIT

No. 1715

002366

MOOSE SCHOOL OF ELECTRICAL ENGINEERING UNIVERSITY OF PENNSYLVANIA	
POWER WIRE TRAY FOR RACK & LID FOR SAME	SCALE A. C. 1/8" FULL SIZE
MATERIAL 3/8" 1/4" SWEET STEEL C. 2 3/4" SWEET STEEL	FINISH
Drawn by: M5M	PROJECT: PK
OCT 29 1945	Approved by: