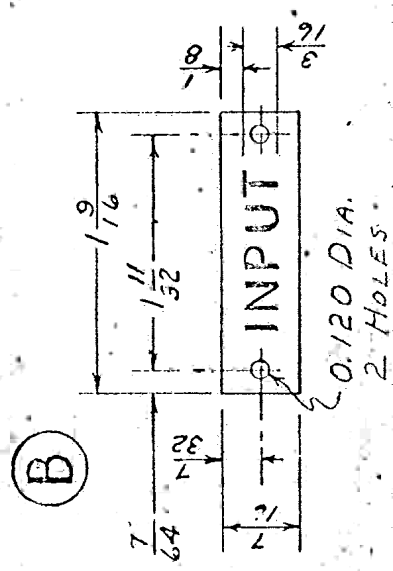


(C) THIS PLATE
SIMILAR TO (B)
EXCEPT LETTERED
AS FOLLOWS:
OUTPUT



NOTE:-
ALL CHARACTERS
ARE REVERSED
ETCHED ON PLATE.

VARIATIONS ON FINISHED DIMENSIONS UNLESS OTHERWISE MARKED	
BASIC DIMENSIONS	FRACTIONAL DIMENSIONS
UP TO 1/4	± 1/320
ABOVE 1/4 TO 6	± 1/400
Above 6 TO 24	± 1/320
ABOVE 24	± 1/16
	DECIMAL DIMENSIONS
	± .005
	± .005
	± .010
	± .015

ALL DIMENSIONS ARE IN INCHES
USE FIGURED DIMENSIONS TO NOT SCALE

MOORE SCHOOL OF ELECTRICAL ENGINEERING
UNIVERSITY OF PENNSYLVANIA

PULSE AMPLIFIER NAME PLATES

DATE	FINISH	SCALE
0.032 SHEET ZINC	PLATED & BACKGROUND BLACK LACQUERED	APPROX. FULL SIZE
Drawn by: CJM:c	Checked by: J Cummings	APPROVED BY: 2-8-46
JAN. 2, 1946		PX-3-284