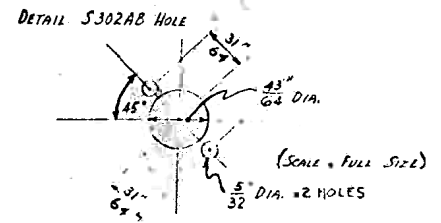


VARIATIONS IN FINISHED DIMENSIONS UNLESS OTHERWISE MARKED

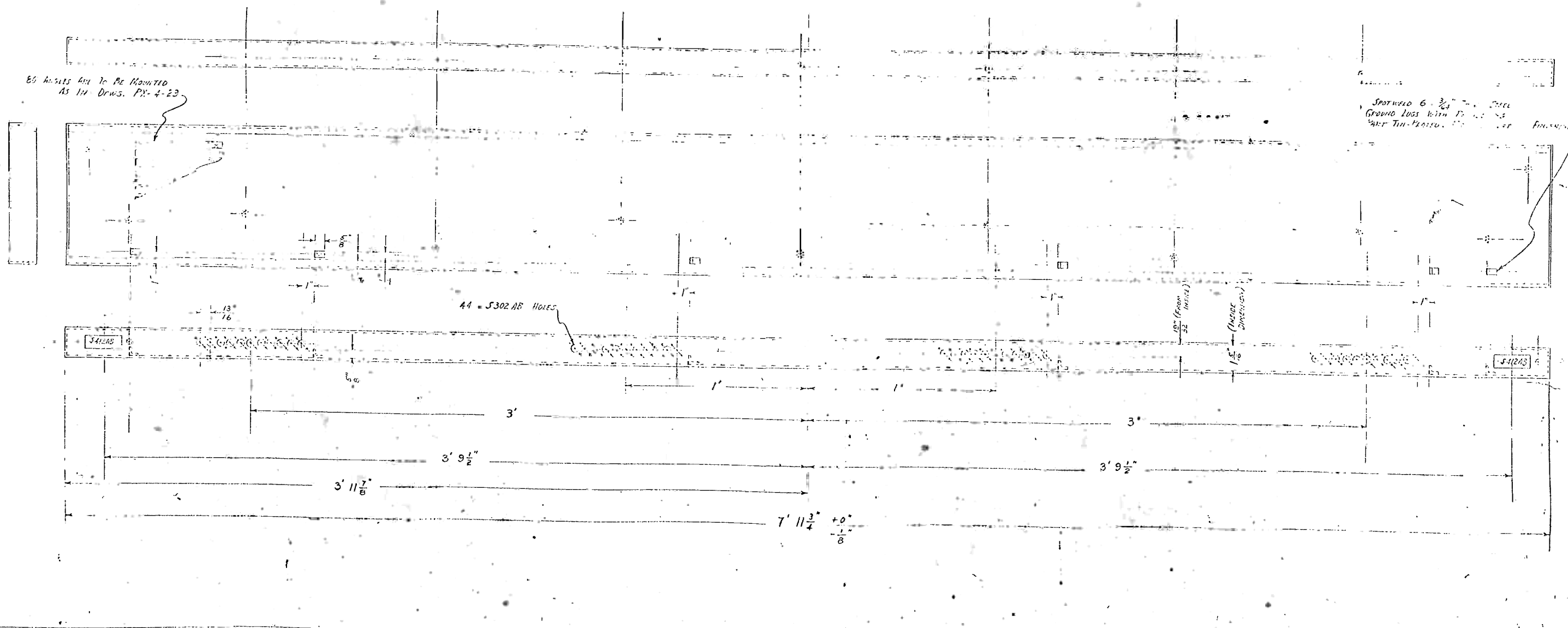
BASIC DIMENSIONS	FRACTIONAL DIMENSIONS	DECIMAL DIMENSIONS
UP TO 1/4"	$\pm \frac{1}{128}$ "	$\pm .005$ "
ABOVE 1/4" TO 6"	$\pm \frac{1}{64}$ "	$\pm .005$ "
ABOVE 6" TO 24"	$\pm \frac{1}{32}$ "	$\pm .010$ "
ABOVE 24"	$\pm \frac{1}{16}$ "	$\pm .015$ "



**NOTE:**  
EXCEPT THAT 4 ROWS OF S302AB HOLES REPLACE 4 S412AB HOLES & THAT THE POSITION OF GROUND-LESS ARE DIFFERENT, THIS DRAWING IS THE SAME AS DRAWING NO. PX-4-23.

60 ANGLES ARE TO BE MOUNTED AS IN DRWG. PX-4-23

SPOTWELD 6 - 3/64" STEEL GROUND LESS WITH 17 - 1/16" PART TIN-PLATED...



MOORE SCHOOL OF ELECTRICAL ENGINEERING  
UNIVERSITY OF PENNSYLVANIA

PROGRAM TRUNK TRAY

MATERIAL	FINISH	SCALE
SEE DRWG. PX-4-23	WRINKLED BLACK	MIN. BOX 1/2 FULL SIZE
Drawn by: MSM Jan 11, 1944	Checked by:	Approved by: Jan 11, 1944 PX-4-23