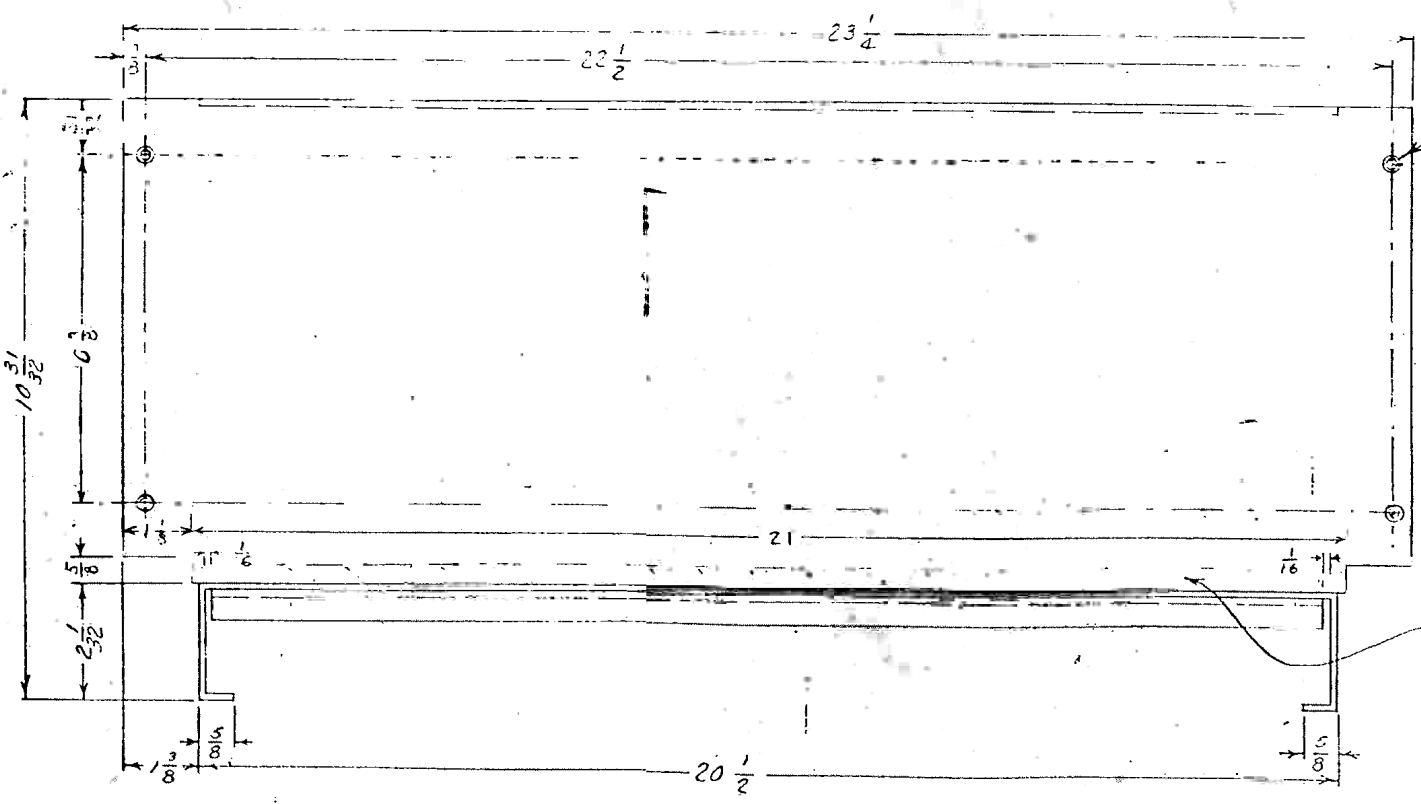
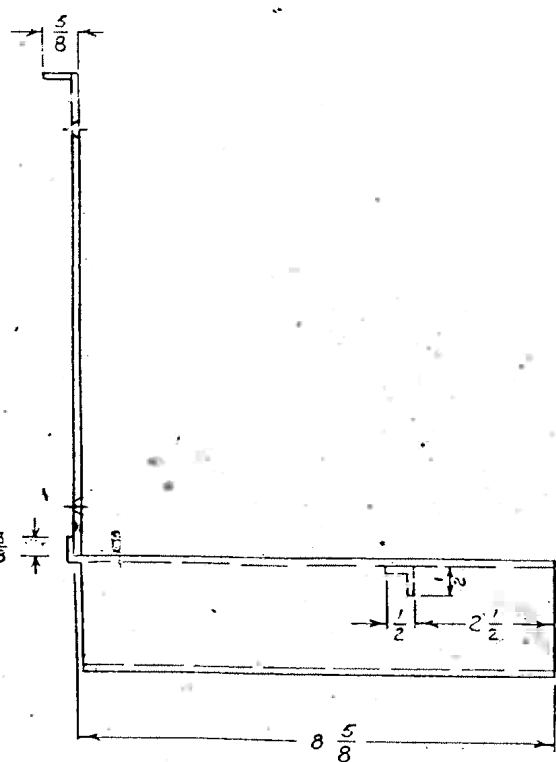


SPOTWELD. MAXIMUM DISTANCE BETWEEN SPOTWELDS 2"



5 HOLES FOR HEAT HEAD MACHINE SCREW TO BE FLUSH WITH SURFACE.

SPOT WELD

REVISIONS	LOWEY CORRECS COT TO CLEAR TINY BRACKET	1
-----------	---	---

DATE	BY	CHKD BY
UP TO	± 1/32	± .001
ABOVE	± 1/16	± .005
ADDITIONAL	± .015	± .015
ALL USE	SEE IN	OF SCALE

MOORE SCHOOL OF ELECTRICAL ENGINEERING
UNIVERSITY OF PENNSYLVANIA

UPPER FRONT PANEL DUST COVER

MATERIAL	FINISH	SCALE
.050 S. G. GALV	HICKLED BLACK	1/2" FULL SIZE

APPROVED: L. Cummins, July 18, 1944
 APPROVED: [Signature], 7-17-44
 APPROVED: [Signature], 7-17-44

PX-5-226