

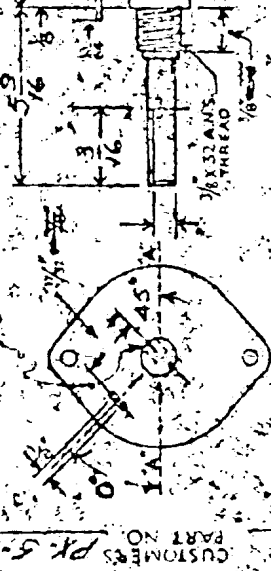
OAK TYPE SWITCH

HC, DH, DNC, OH, QDH, OHC, ODH, C

TYPE

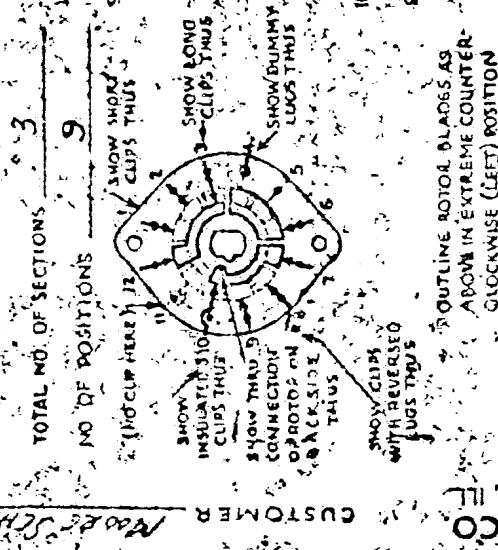
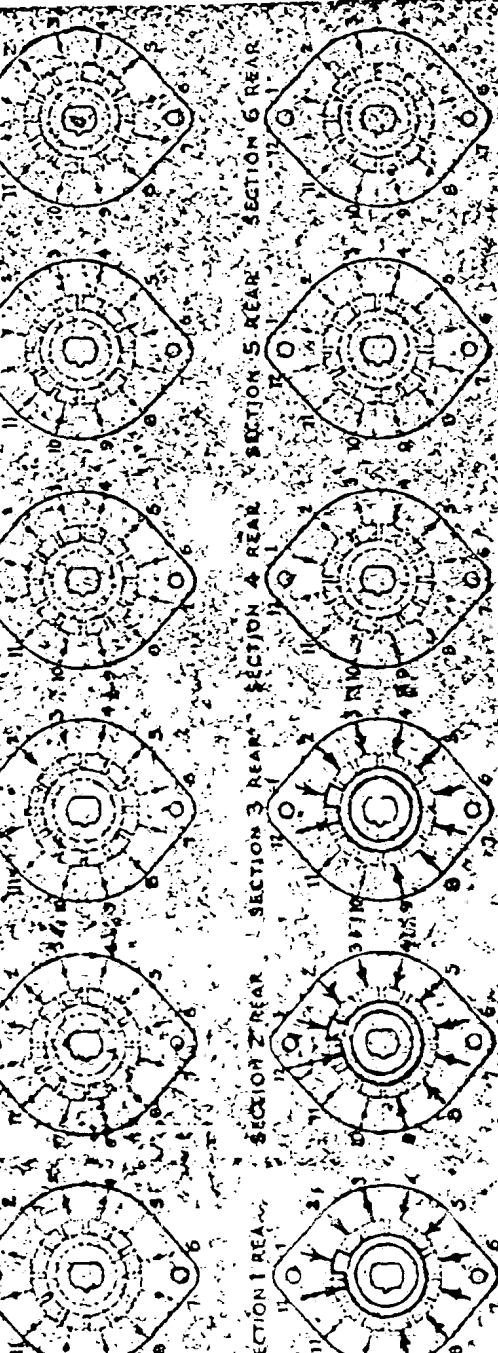
SWITCH

1250 CLYBORN AVE CHICAGO 10, ILL.



DRAW IN FLAT ON ABOVE
SHAFT IN EXTREME
COUNTER CLOCKWISE
POSITION AND SHOW
ANGLE IN REFERENCE
TO LINE A-A

FRONT AND REAR
OF SECTIONS VIEW
ED FROM FRONT
KNOB END OF SWITCH
IN EXTREME COUNTER
CLOCKWISE POSITION



TOTAL NO. OF SECTIONS 3
NO. OF POSITIONS 9
(NO CLIP HERE) 12
SHOW LONG CLIPS THUS
SHOW SHORT CLIPS THUS
SHOW BUMPY LUGS THUS
SHOW PROTRUSION ON BACK SIDE THUS
SHOW CLIP WITH REVERSED LUGS THUS
OUTLINE ROTOR BLADES AS ABOVE IN EXTREME COUNTER CLOCKWISE (LEFT) POSITION

FILL IN ALL DIMENSIONS INDICATED ABOVE AND CHECK ALL SPECIFICATIONS BELOW. REFER TO OAK ENGINEERING DATA SHEETS FOR STANDARD DIMENSIONS OF TYPE DESIRED AND FOR SPECIMEN OF THIS LAYOUT SHEET TO OBTAIN MOST CONFORMAL UNITS AND SHORTEST DELIVERY DATES PLEASE ADHERE TO THE STANDARDS AS CLOSELY AS POSSIBLE.

SHORTING TYPE CONTACTS NON-SHORTING IF NOT SPECIFIED SHORTING TYPE WILL BE SUPPLIED.
INSULATION: BAKELITE CERAMIC SPECIFY IMPREGMATION IF REQUIRED.
FINISH REQUIREMENTS: COMMERCIAL ARMY NAVY SALT TEST (IF ANY GIVE DETAILS)
CONTACTS AND ROTORS: SILVER PLATED BRASS SOLID SILVER ALLOY IF NOT SPECIFIED SILVER PLATED BRASS WILL BE SUPPLIED.
MOUNTING HARDWARE: SUPPLY 3/16" 32 RITS ACROSS PLAIN MATERIAL PLATING
 INTERNAL TOOTH LOCKWASHER MATERIAL PLATING
ON FRONT PLATE YES NO

CUSTOMER NOTES:
ONE NA 2668 TO H31 EXCEPT IN 2 SMART
INSTEAD OF 13 POSITIONS
INSTEAD OF 11 POSITIONS

USED IN NA 2668 (12)

CUSTOMER PART NUMBER (NUMBER) 9-4-4

CUSTOMER'S PART NO. PK 5-240

MOORE SCHOOL VOLT P

CUSTOMER

OAK MANUFACTURING CO