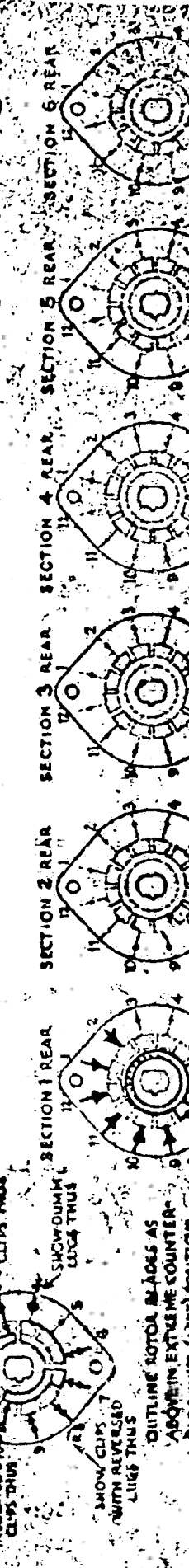
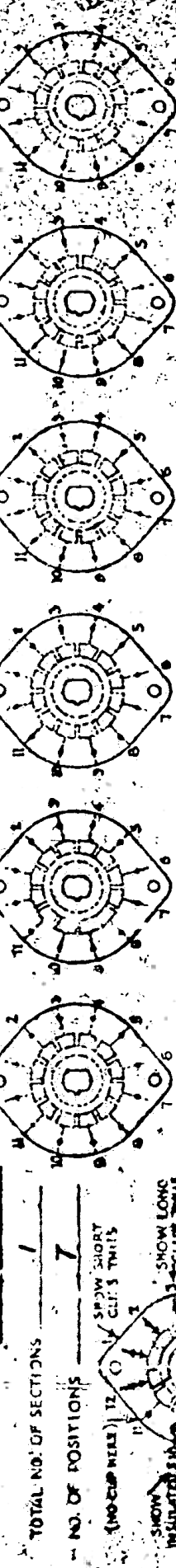
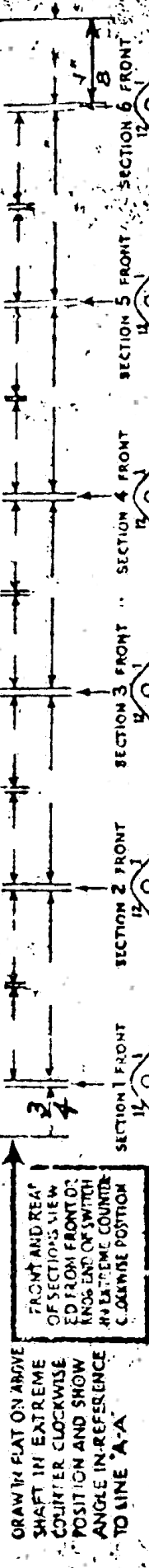
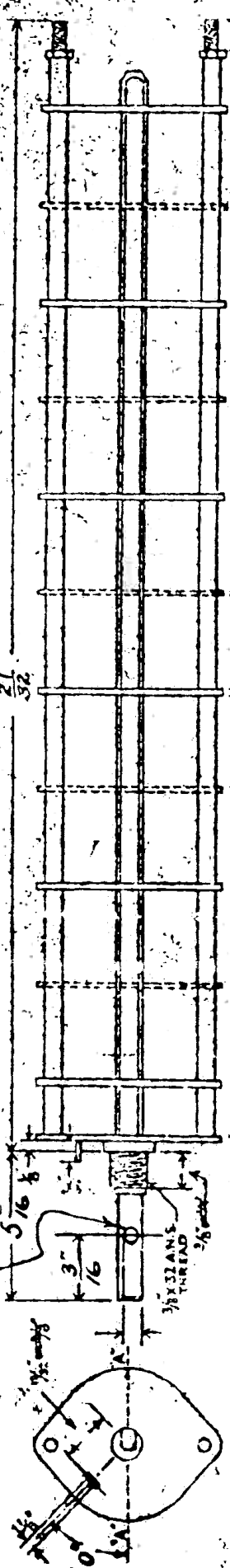


# OAK III TYPE SWITCH

0.161" DIA. - 5/8" DEEP - 1 HOLE NO FLAT.



**FRONT AND REAR OF SECTIONS VIEWED FROM FRONT OR REAR END OF SWITCH AT EXTREME COUNTER-CLOCKWISE POSITION**

**DRAW FLAT ON ANVIL**

**SHAFT IN EXTREME COUNTER-CLOCKWISE POSITION AND SHOW ANGLE IN REFERENCE TO LINE "A-A"**

**TOTAL NO. OF SECTIONS** — 1

**NO. OF POSITIONS (NO-CLIP REAR)** — 7

**SHOW SHORT CLIP'S THIS**

**SHOW LONG INSULATED CLIP'S THIS**

**SHOW CLIPS WITH REVERSED LUGS THIS**

**SHOW DUMMIES LUGS THIS**

**OUTLINE ROTOR BLADES AS APPEAR IN EXTREME COUNTER-CLOCKWISE (LEFT) POSITION**

**Notes**—1/2" thick, with insolated clips 1/8" mounting centers 1/16".

**Leading Keys**—1/4" wide, 1/8" of 3/8" radius at 1/2" intervals from "A A". These dim. apply to Double Keys which are 1/20" apart.

**Notes**—Spacing of Sections—Single insolated sections 1/8" when clips have key from each other, 1/4" when clips have in same direction as adjoining sections and 1/2" when clips of both sections face toward each other.

**Min. Spacing between a front plate and first section**—1/4" with clip to rear of first section, 3/8" with clips facing front.

**Shields**—Standard 1/8" wide and shape of stator.

**Rotor Blades**—The rotor blades are normally furnished with "short" 1/4" x 3/8" teeth which maintain contact with one 5/8" impact with after the next contact is made.

**Notes**—Spacing of Sections—Single insolated sections 1/8" when clips have key from each other, 1/4" when clips have in same direction as adjoining sections and 1/2" when clips of both sections face toward each other.

## CUSTOMER'S NOTES

## REVISION:

SPACING BETWEEN FRONT PLATE & WAFER WAS 1/2"

OAK No. 28179-H1

USED IN UNIT (29)