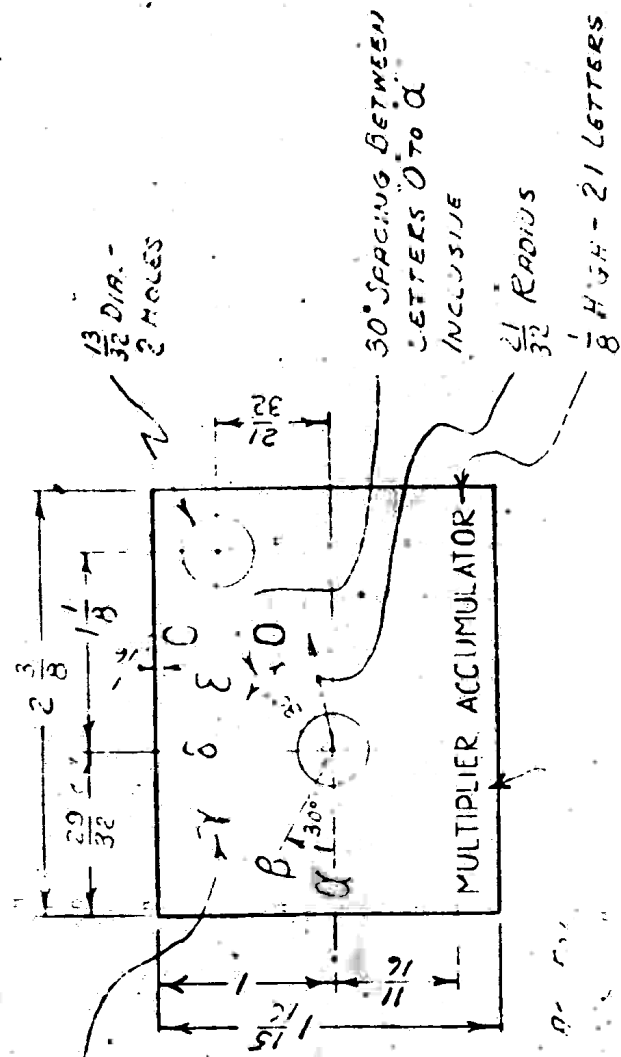


ALL CHARACTERS ARE REVERSED
STAMPED ON PLATE.



REVISIONS

PLATES NEW FOR
MULTIPLIER & MULTI-
PLICAND ACCUMULATOR

J. Cummings

VARIATIONS ON FINISHED DIMENSIONS (UNLESS OTHERWISE MARKED)	
BASIC DIMENSIONS	DECIMAL DIMENSIONS
UP TO 1/8	± 1/128
ABOVE 1/8 TO 1/4	± 1/64
ABOVE 1/4 TO 1/2	± 1/32
ABOVE 1/2	± 1/16
	± .005
	± .005
	± .010
	± .015

ALL DIMENSIONS ARE IN INCHES.
USE FIGURED DIMENSIONS - DO NOT SCALE.

MOORE SCHOOL OF ELECTRICAL ENGINEERING UNIVERSITY OF PENNSYLVANIA		MULTIPLIER ACCUMULATOR SWITCH DRILL PLATES	
MATERIAL	FINISH	SCALE	
0.032" SHEET ZINC	PLATED & BRACK GROUND BLACK REVERSED	APPROX FULL SIZE	
Drawn by: J. Cummings AUGUST 15, 1934	Checked by: J. Cummings 10-9-34	Approved by: J. Cummings 10-9-34	PX-6-22A