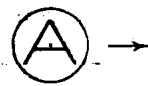


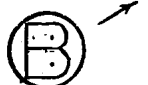
OMIT THIS HORIZONTAL Row of 30
5/8 DIA. HOLES ON (B)

OMIT THIS VERTICAL Row of 10
5/8 DIA. HOLES ON (A)



AS SHOWN EXCEPT OMIT
20 HOLES AS NOTED

OMIT THIS HORIZONTAL Row of 30
5/8 DIA. HOLES ON (B)



AS SHOWN EXCEPT OMIT 60
HOLES AS NOTED & CSK.
188 HOLES FROM OPPOSITE
FACE.

OMIT THIS HORIZONTAL Row of
21-5/8 DIA. HOLES ON (D)

OMIT THIS VERTICAL Row of
10 5/8 DIA. HOLES ON (C)

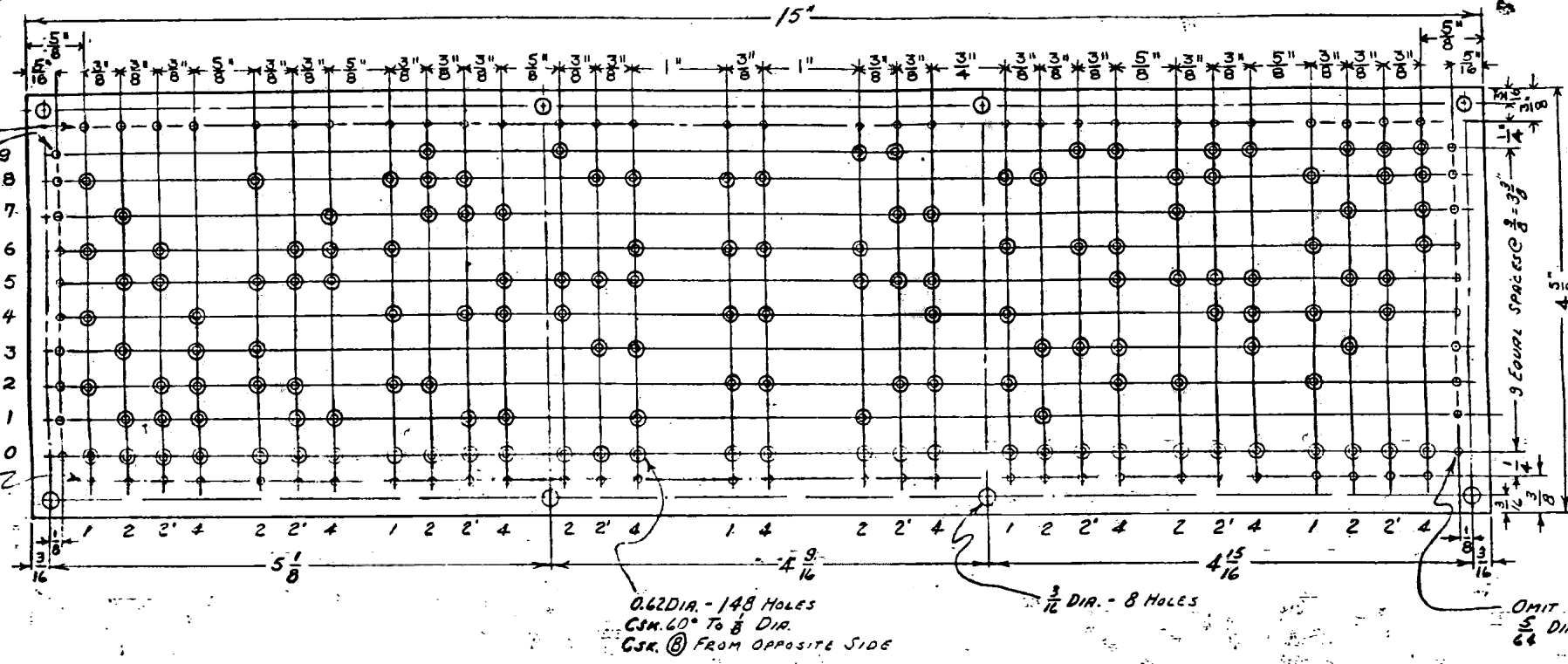


AS SHOWN EXCEPT OMIT
20 HOLES AS NOTED.

OMIT THIS HORIZONTAL Row of
21-5/8 DIA. HOLES ON (D)

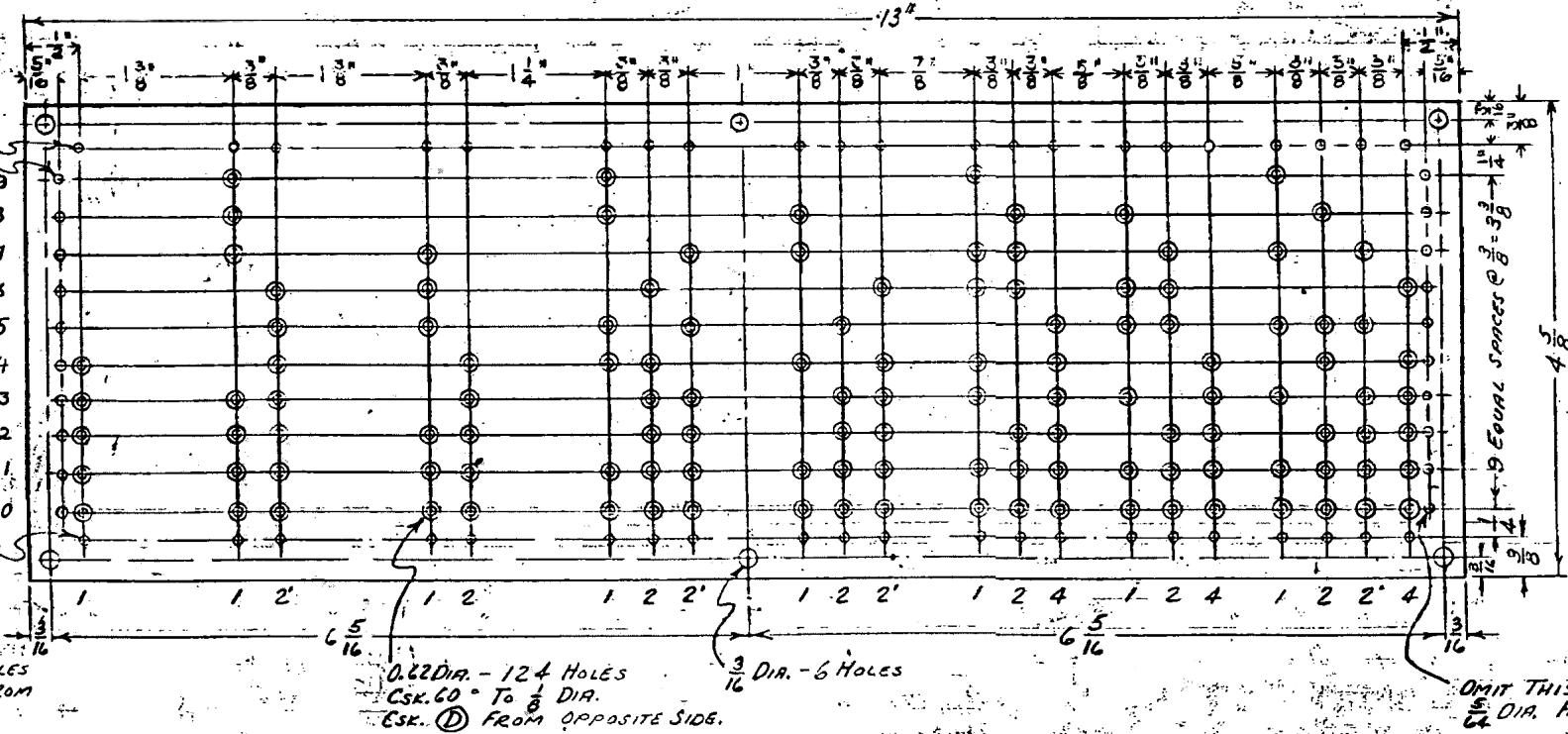


AS SHOWN EXCEPT OMIT 42 HOLES
AS NOTED & CSK. 124 HOLES FROM
OPPOSITE FACE.



THIS END AT TOP OF
PX-6-102

OMIT THIS VERTICAL Row of 10
5/8 DIA. HOLES ON (A)



THIS END AT TOP OF
PX-6-103

OMIT THIS VERTICAL Row of 10
5/8 DIA. HOLES ON (C)

(SEE) ROW. ADDED
ON ALL PIECES
7-3147-1

NOTE:
 DRILL A&B AND C&D TOGETHER
 A&B FOR UNITS ON R.H. MULTIPLICATION TABLE PX-6-102
 C&D FOR TENS ON L.H. MULTIPLICATION TABLE PX-6-103

MOORE SCHOOL OF ELECTRICAL ENGINEERING
 UNIVERSITY OF PENNSYLVANIA

MULTIPLICATION TABLES FOR HIGH SPEED MULTIPLIER

MATERIAL	FINISH	SCALE
1/8" Black-Paper Base Micarta	NONE	FULL SIZE

Drawn by: J. EDLSACK NOV 15, 1944	Checked by: qwb 11/15/44	Approved by: P.L.S. 12/15/44
---	--------------------------------	------------------------------------

PX-6-227