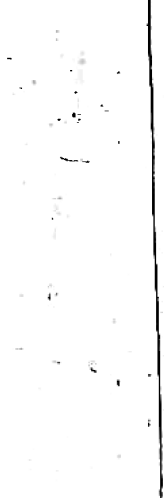
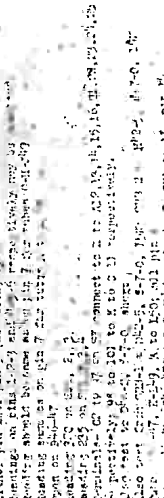
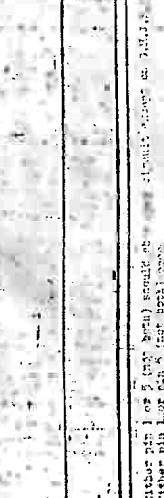
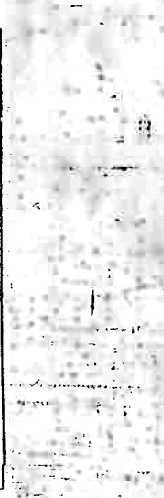
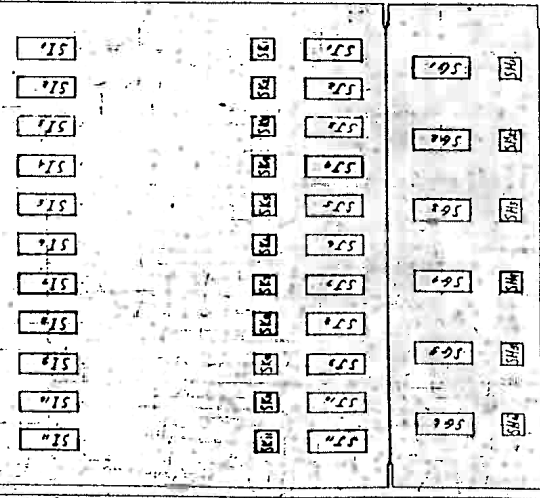
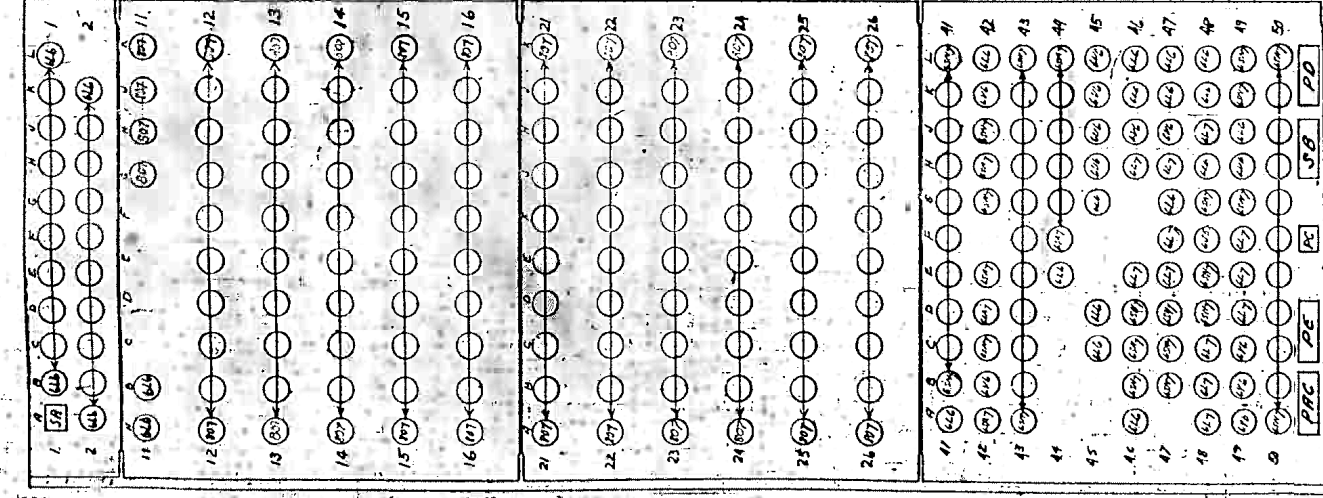


static tests are to be run with all-leads and plugs in with function in correct position. In tests, high voltage components should be equipped with a voltage terminal to which a high voltage probe is connected. This should be done with all cables connected to the test subject.

PANEL #1



1	2	3	4	5	6	7	8	9	10	11	12	13	14	15	16	17	18	19	20	21	22	23	24	25	26
...

1	2	3	4	5	6	7	8	9	10	11	12	13	14	15	16	17	18	19	20	21	22	23	24	25	26
...

MOORE SCHOOL OF ELECTRICAL ENGINEERING
UNIVERSITY OF PENNSYLVANIA

FUNCTION TABLE TEST RESULTS

MATERIAL: ...

Checked by: ...

Approved by: ...

Date: ...

Case Summary: ...
The Case Summary, JEP-30318
The Case Summary, JEP-30318
The Case Summary, JEP-30318