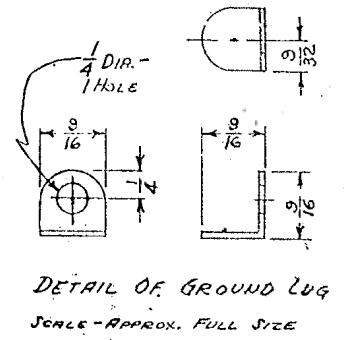
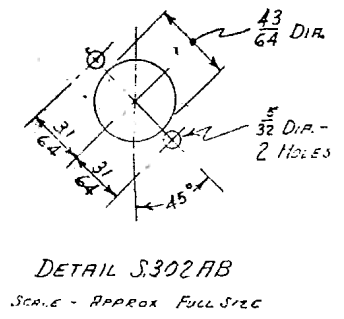
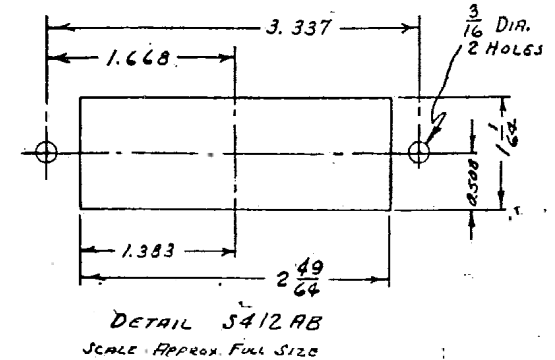
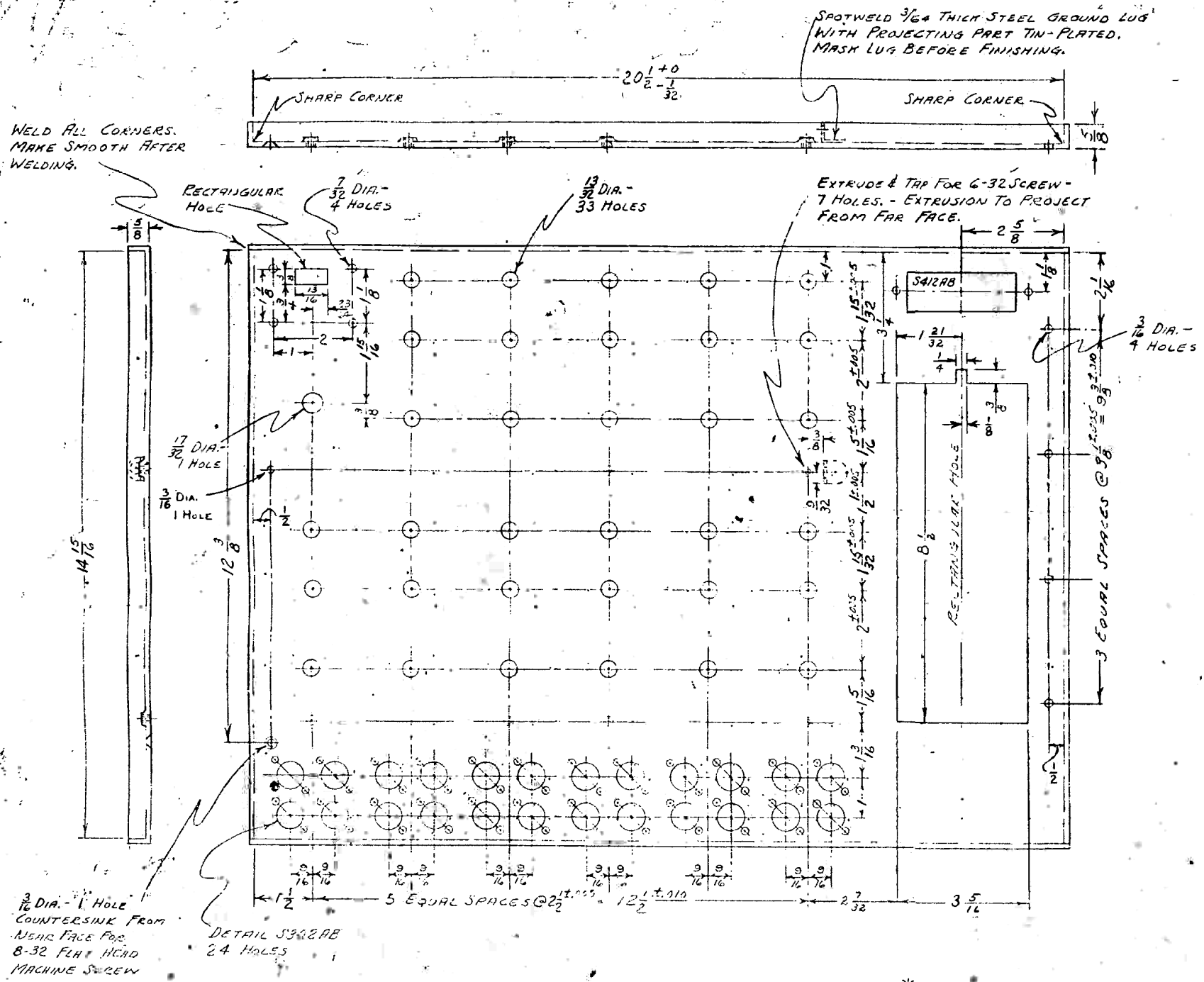


WELD ALL CORNERS. MAKE SMOOTH AFTER WELDING.



* NOTE - $3\frac{5}{16} \times 8\frac{1}{2}$ RECTANGULAR HOLE WILL BE CUT IN MOORE SCHOOL SHOP. PAINTING WILL BE DONE FOLLOWING THIS OPERATION.

S 412 16 HOLES SHARD
S 362 12/12/44
S 302 12/27/44

FOUR 3/4 DIA. HOLES OMITTED
RECTANGULAR HOLE WAS
3/4 x 6 1/2

VARIATIONS ON FINISHED DIMENSIONS (UNLESS OTHERWISE MARKED)		
BASIC DIMENSIONS	FRACTIONAL DIMENSIONS	DECIMAL DIMENSIONS
UP TO 1/8	1/16	0.0625
ABOVE 1/8 TO 1/4	1/32	0.03125
ABOVE 1/4 TO 1/2	1/64	0.015625
ABOVE 1/2	1/128	0.0078125
ALL DIMENSIONS ARE IN INCHES		

MOORE SCHOOL OF ELECTRICAL ENGINEERING
UNIVERSITY OF PENNSYLVANIA

FUNCTION TABLE No. 1 FRONT PANEL

MATERIAL	FINISH	SCALE
1/8 SHEET STEEL	3/32 WORNISHED FINISH	1/8" = 1"
Drawn by J.A.C.	Checked by J. Arnold	Approved by J. T. Moore
August 22, 1944	1944	1944

PX-7212