

REVISIONS

$\frac{5}{16}$ HIGH-NUMBER VARIES FROM 'A' TO 'A' INCLUSIVE. ALSO FROM 'B' TO 'B 4' INCLUSIVE.

$\frac{13}{32}$ DIA. - 2 HOLES

$\frac{9}{16}$ RADIUS

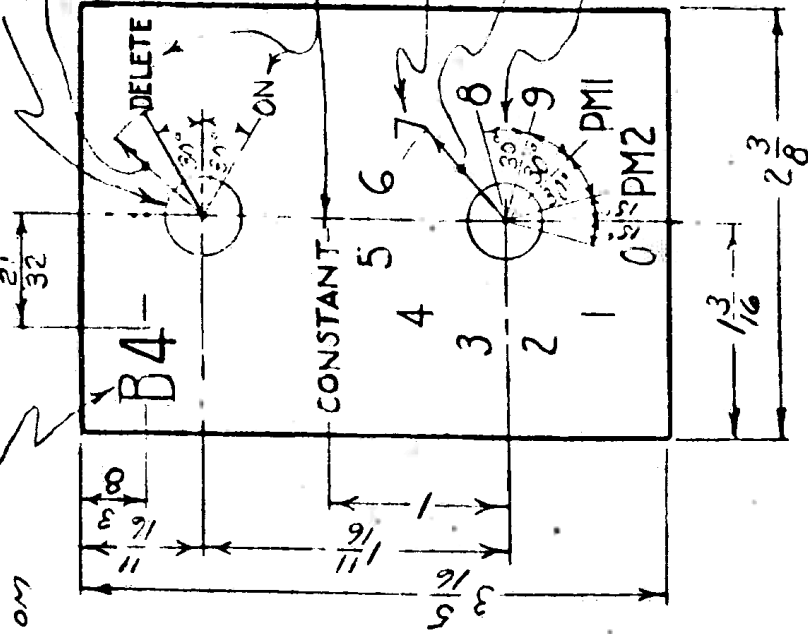
$\frac{1}{8}$ HIGH - 16 LETTERS

$\frac{3}{16}$ HIGH - 12 NUMERALS, 4 LETTERS

$\frac{21}{32}$ RADIUS

30° SPACING BETWEEN NUMBERS '0' TO '9' INCLUSIVE

ALL CHARACTERS ARE REVERSED ETCHED ON PLATE.



VARIATIONS ON FINISHED DIMENSIONS (UNLESS OTHERWISE MARKED)	
BASIC DIMENSIONS	DECIMAL DIMENSIONS
UP TO $\frac{1}{4}$	+ .005
ABOVE $\frac{1}{4}$ TO 6	+ .005
ABOVE 6 TO 24	+ .010
ABOVE 24	+ .015

ALL DIMENSIONS ARE IN INCHES.
USE FIGURED DIMENSIONS - DO NOT SCALE.

MOORE SCHOOL OF ELECTRICAL ENGINEERING UNIVERSITY OF PENNSYLVANIA	
FUNCTION TABLE	CONSTANT SWITCH DIAL PLATE
MATERIAL	FINISH
0.032" SHEET ZINC	PLATED & BACKGROUND BLACK LAQUELED
Scale	APPROX. FULL SIZE
Drawn by: J. CUMMINGS AUGUST 4, 1944	Checked by: J. CUMMINGS 10-9-44
Approved by: J. CUMMINGS 10-9-44	PX-7-220