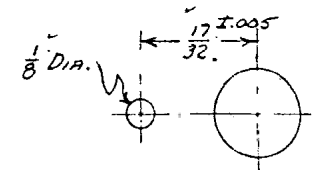
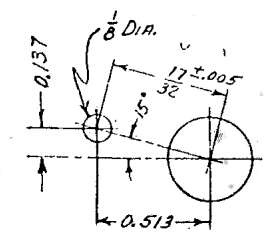
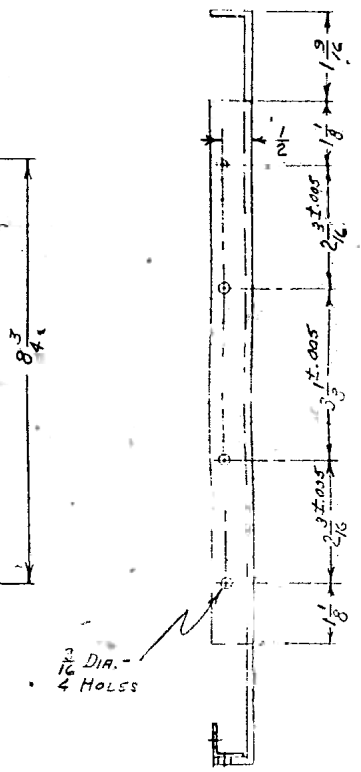
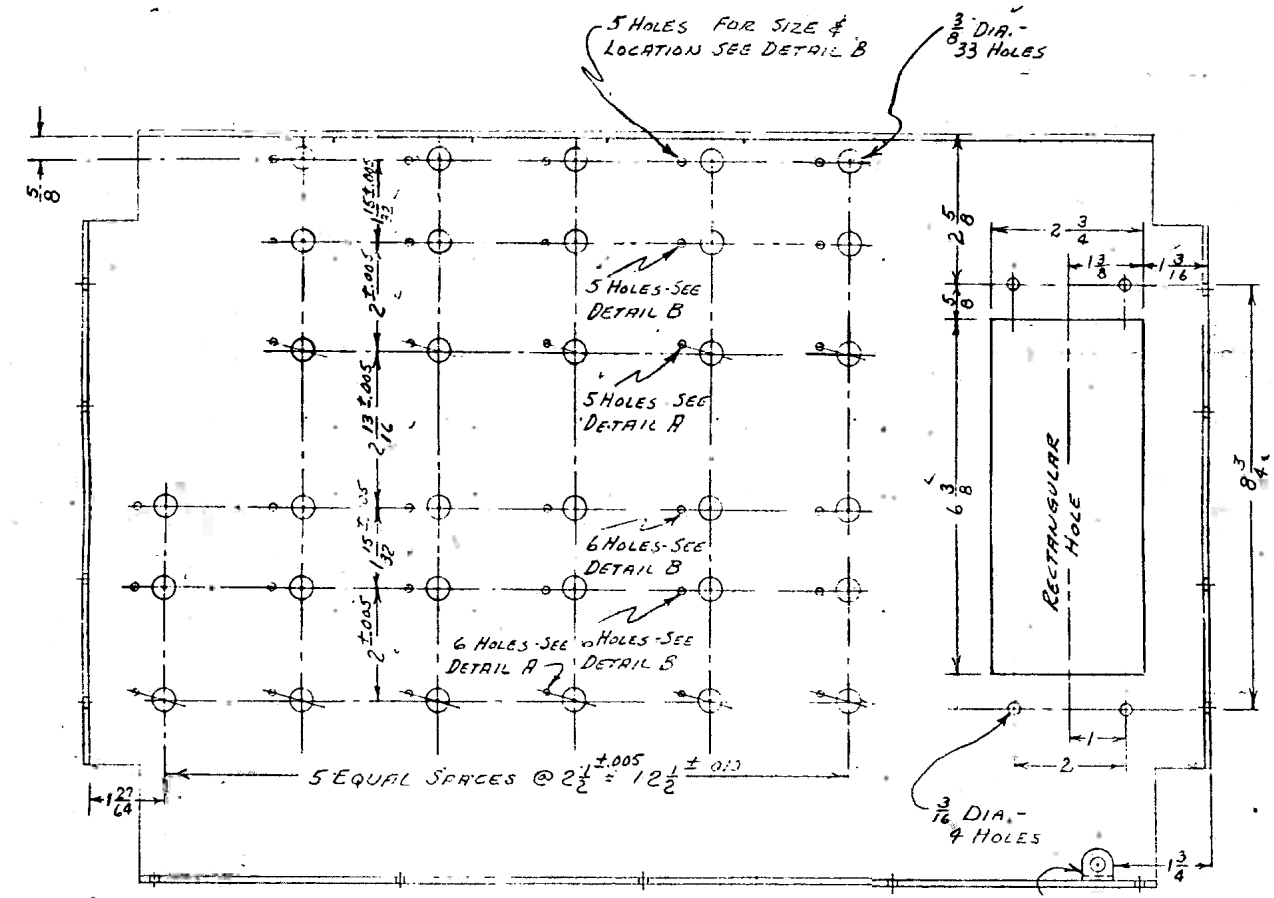
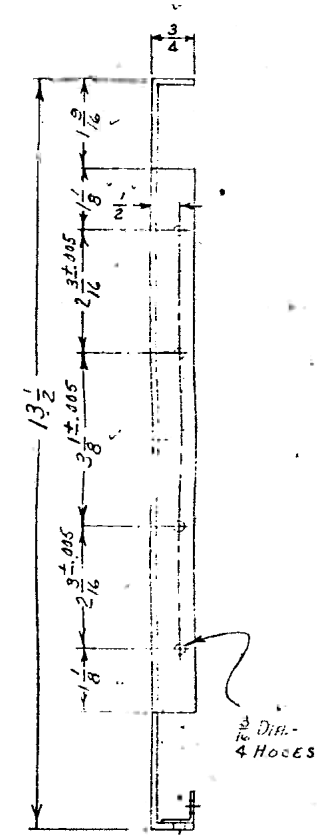


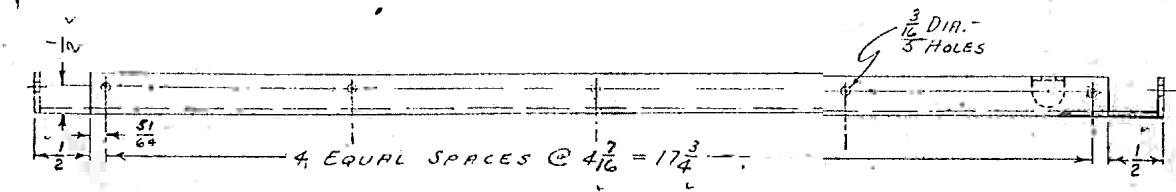
DETAIL OF GROUND LUG
SCALE - APPROX. FULL SIZE



DETAIL B
SCALE - APPROX. DOUBLE SIZE



DETAIL A
SCALE - APPROX. DOUBLE SIZE



SPOTWELD 3/16 THICK STEEL GROUND LUG WITH PROJECTING PART TIN PLATED. MASK LUG BEFORE FINISHING.

RECTANGULAR HOLE WAS 1 1/4 x 4 7/8. FOUR 3/8 DIA. HOLES ADDED.
1-2-45

VARIATIONS ON FINISHED DIMENSIONS (UNLESS OTHERWISE SPECIFIED)		
BASIC DIMENSIONS	FRACTIONS	DECIMALS
UP TO 1/8	± 0.005	± 0.005
ABOVE 1/8 TO 1/4	± 0.005	± 0.005
ABOVE 1/4 TO 1/2	± 0.005	± 0.005
ABOVE 1/2 TO 1	± 0.005	± 0.005
ABOVE 1 TO 2	± 0.005	± 0.005
ABOVE 2 TO 4	± 0.005	± 0.005
ABOVE 4 TO 16	± 0.005	± 0.005
ABOVE 16 TO 32	± 0.005	± 0.005
ABOVE 32 TO 64	± 0.005	± 0.005
ABOVE 64 TO 128	± 0.005	± 0.005
ABOVE 128 TO 256	± 0.005	± 0.005
ABOVE 256 TO 512	± 0.005	± 0.005
ABOVE 512 TO 1024	± 0.005	± 0.005

MOORE SCHOOL OF ELECTRICAL ENGINEERING UNIVERSITY OF PENNSYLVANIA			
FUNCTION TABLE NO. 1 SWITCHING PANEL			
MATERIAL		FINISH	
1/8" SHEET STEEL		INFINITELY BRIGHT	
Drawn by J. Cummings	Checked by J. Cummings	Appr. by J. Cummings	DATE August 19, 1944
		PX-7722	