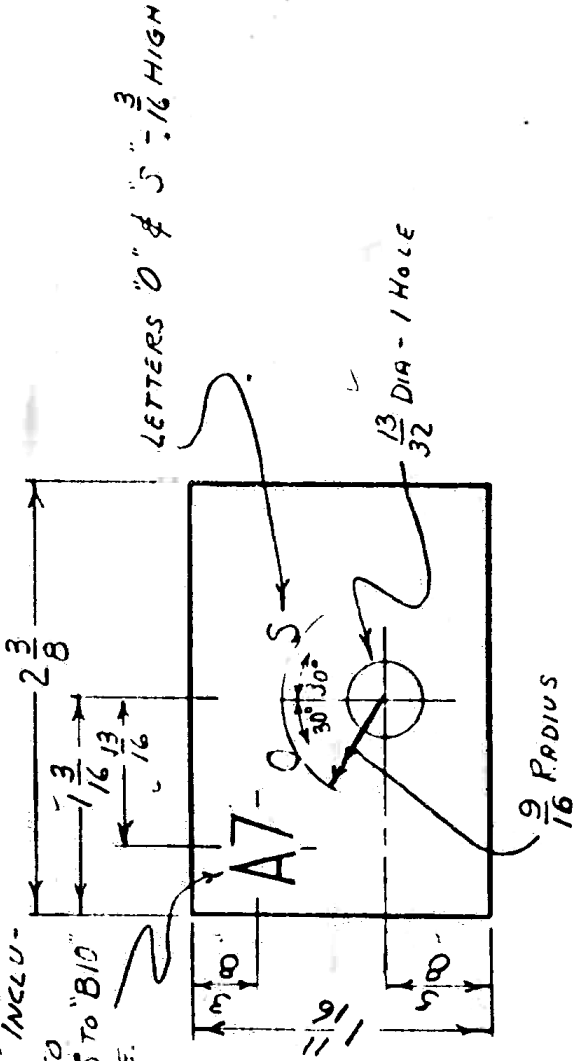


REVISIONS

$\frac{5}{16}$ HIGH - NUMBER VARIES FROM "A" TO "A15" INCLUSIVE. ALSO FROM "B5" TO "B10" INCLUSIVE.



NOTE:-
ALL CHARACTERS TO BE REVERSED ETCHED ON PLATE.

MOORE SCHOOL OF ELECTRICAL ENGINEERING
UNIVERSITY OF PENNSYLVANIA

FUNCTION TABLE SUBTRACT PULSE SWITCH DIAL PLATE

SCALE

APPROX FULL SIZE

Approved by:

J. Cummings

10-9-44

Checked by:

J. Cummings

10-1-44

PX-7-229

VARIATIONS ON FINISHED DIMENSIONS (UNLESS OTHERWISE MARKED)

CASIC DIMENSIONS	FRACTIONAL DIMENSIONS	DECIMAL DIMENSIONS
UP TO 4	$\pm 1/128$	$\pm .005$
ABOVE 4 TO 6	$\pm 1/64$	$\pm .005$
ABOVE 6 TO 24	$\pm 1/32$	$\pm .010$
ABOVE 24	$\pm 1/16$	$\pm .015$

ALL DIMENSIONS IN INCHES.
USE FIC 100 - DO NOT SCALE.