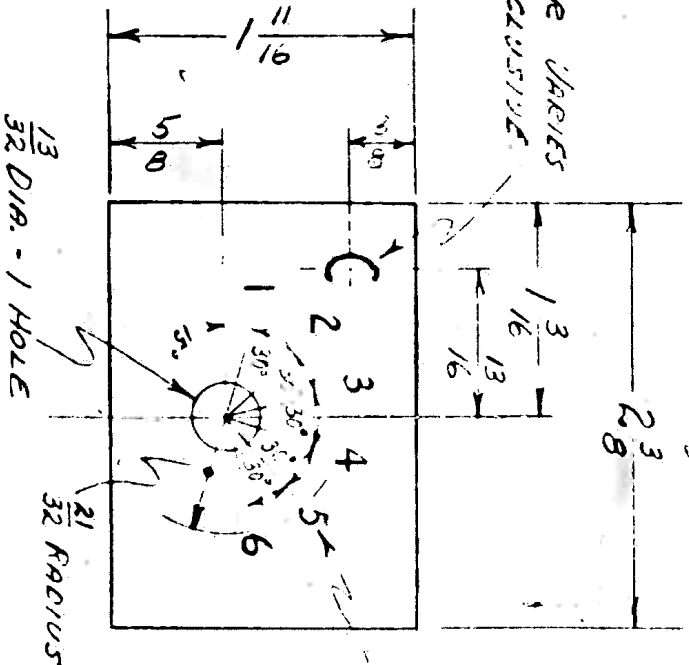


REVISIONS

5/16 HIGH - LETTER SERIES
FROM A TO H INCLUSIVE
ALSO J AND K



3/16 HIGH - 6 NUMERALS

NOTE:

ALL CHARACTERS ARE REVERSED ETCHED ON PLATE.

MOORE SCHOOL OF ELECTRICAL ENGINEERING
UNIVERSITY OF PENNSYLVANIA

MASTER PROGRAM STEPPER CLEAR SWITCH DIAL PLATE

VARIATIONS ON FINISHED DIMENSIONS (UNLESS OTHERWISE MARKED)		
BASIC DIMENSIONS	FRACTIONAL DIMENSIONS	DECIMAL DIMENSIONS
UP TO 1/8	± 1/128	± .005
ABOVE 1/8 TO 1/4	± 1/64	± .005
ABOVE 1/4 TO 3/8	± 1/32	± .010
ABOVE 3/8 TO 1	± 1/16	± .015

ALL DIMENSIONS ARE IN INCHES.
USE FIGURED DIMENSIONS - DO NOT SCALE.

MATERIAL

0.032" SHEET ZINC

FINISH

PLATED & ENGRAINED
BLACK ANCHORED

SCALE

APPROX. FULL SIZE

Drawn by:

MSM

Checked by:

J. Frank
10-9-44

Approved by:

J. Frank
10-9-44

AUG. 22, 1944

PX-8-205