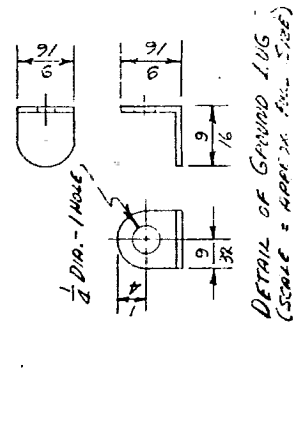
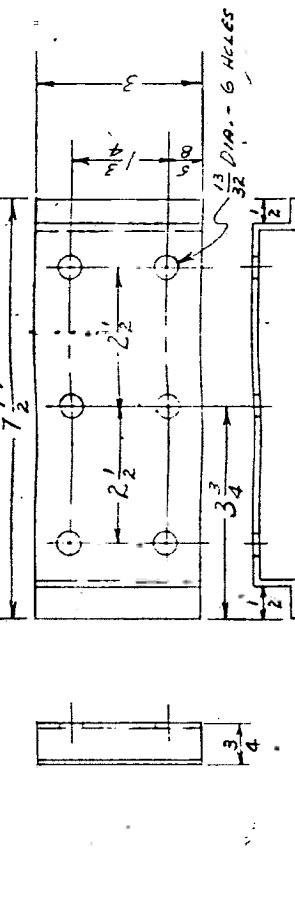
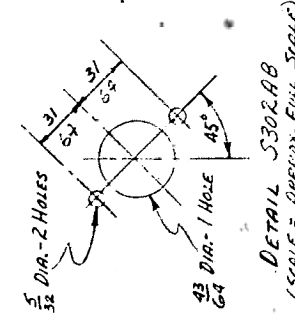
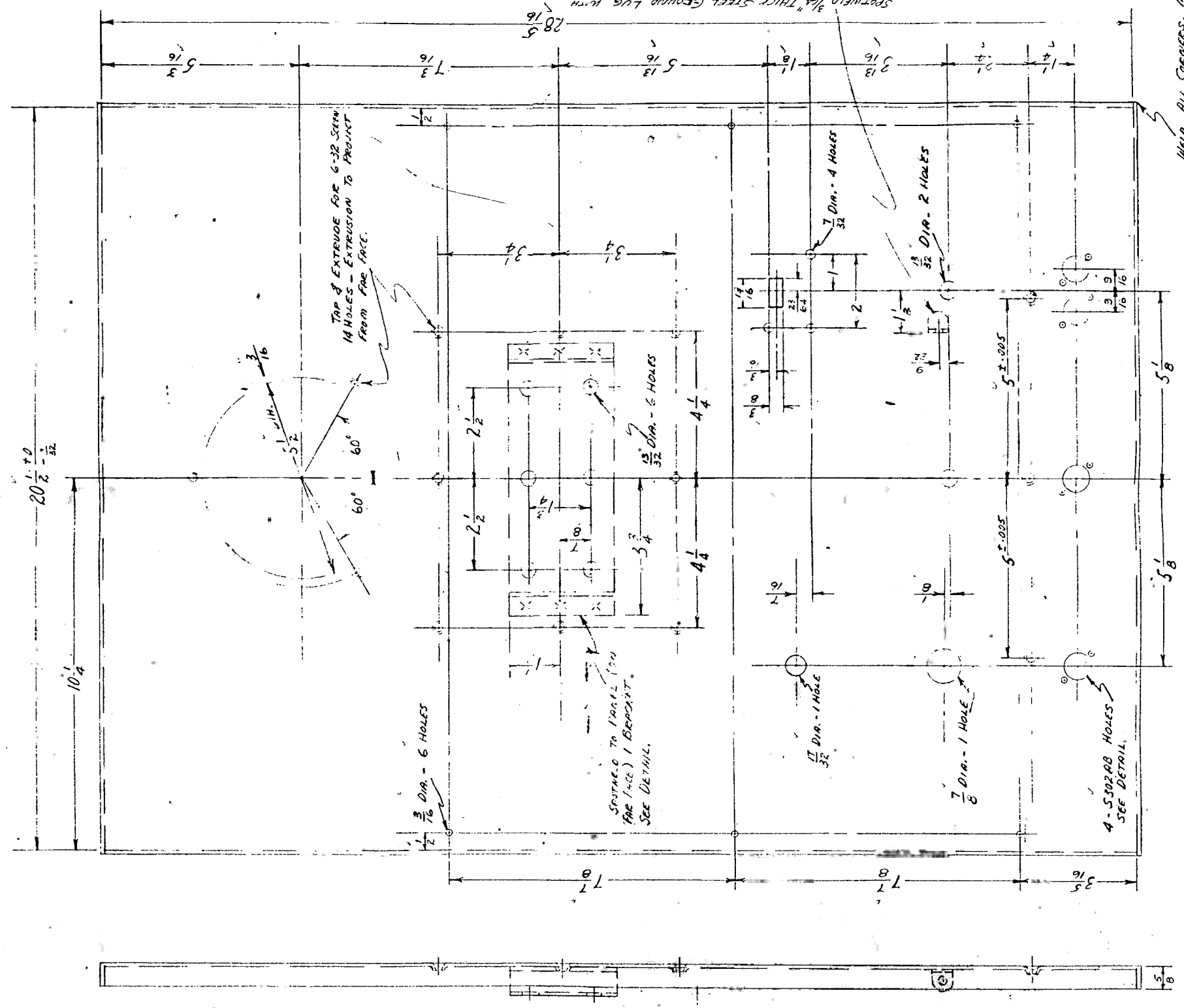


4" DIMS. WERE 4 1/2"
 2 HOLES EXTENDED AND
 TAPPED FOR 6-32 M.S.
 HOLES ON 1/2" OF FACE
 1
 28 7/8 CHANGED TO 28 7/8
 5 1/2" x 5 1/2"
 APPROVED 12-8-44 2



DETAIL BRACKET
 SCALE = 1/2 FULL SIZE
 MATERIAL = 0.050" SHEET STEEL



VARIATIONS ON FINISHED DIMENSIONS (UNLESS OTHERWISE MARKED)

BASIC DIMENSIONS	FRACTIONAL DIMENSIONS	DECIMAL DIMENSIONS
UP TO 1/4	± 1/320	± .003
ABOVE 1/4 TO 6	± 1/64	± .005
ABOVE 6 TO 24	± 1/32	± .010
ABOVE 24	± 1/16	± .020
ALL DIMENSIONS	± .005	± .010

MOORE SCHOOL OF ELECTRICAL ENGINEERING
 UNIVERSITY OF PENNSYLVANIA
 - MASTER CYCLO FRONT PANEL

MATERIAL	FINISH	SCALE
1/16" SHEET STEEL	WRINKLED BLACK *	APPROX. 1/2 FULL SIZE
Drawn by: MSM AUG. 31, 1944	Checked by: J. Paul 9-2-44	Approved by: J. Paul 9-2-44

PX-9-202

* THIS PANEL WILL BE COMPLETED IN THE MOORE SCHOOL STAGE FOR 5 1/2" DIA. HOLE & WILL BE FINISHED LATER.

WELD ALL CORNERS. MAKE SMOOTH AFTER WELDING.

3/8" THICK STEEL GROUNDED LUG WITH PROJECTING PART TYPED. MARK LUG BEFORE FINISHING. SEE DETAIL.

TOP 3/8" EXTENDS FOR 6-32 STEEL 14 HOLES - EXTENSION TO PROJECT FROM FACE.

SPACED TO 1/4" (ON FACE) 1 BRACKET. SEE DETAIL.

17/32 DIA. - 1 HOLE

1/8 DIA. - 1 HOLE

4 - 5/32 DIA. HOLES SEE DETAIL.

7/32 DIA. - 4 HOLES

1/32 DIA. - 2 HOLES

1/2 DIA. - 6 HOLES

13/32 DIA. - 6 HOLES