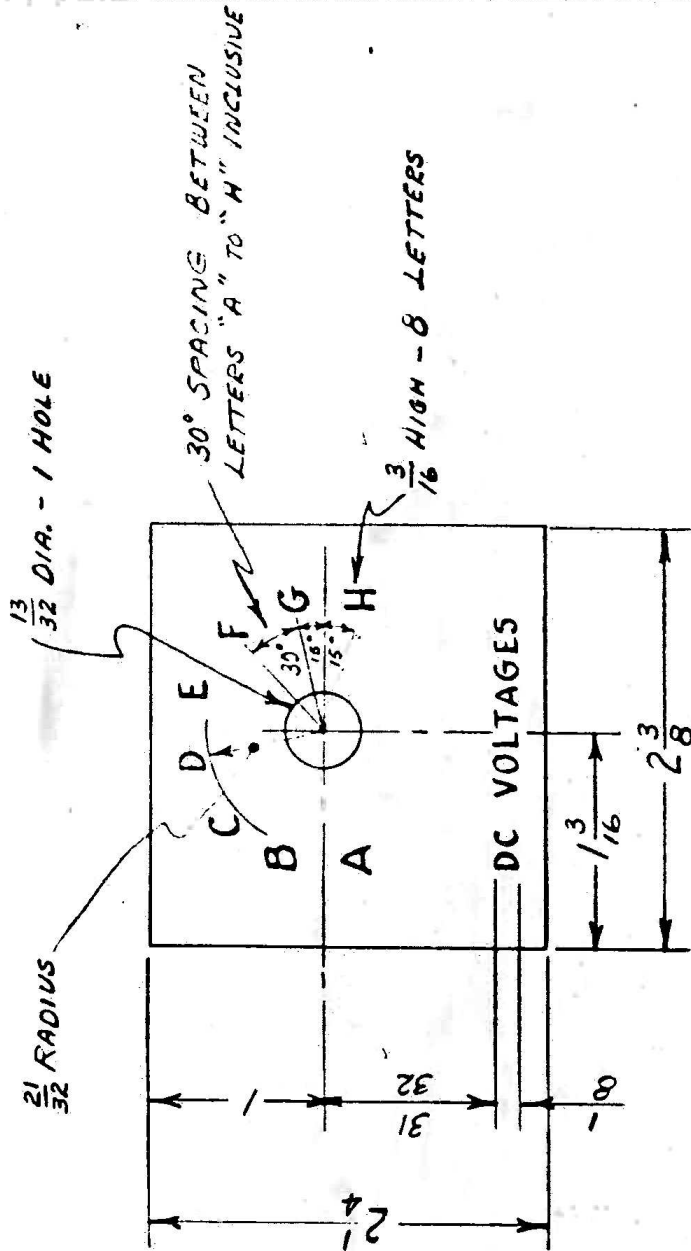


REVISIONS

OAK SWITCH OF THIS NO. CHANGED TO PX-9-216 J.M.E. 11/145

1



NOTE:
ALL CHARACTERS ARE REVERSED ETCHED ON PLATE.

VARIATIONS ON FINISHED DIMENSIONS (UNLESS OTHERWISE MARKED)	
BASIC DIMENSIONS	DECIMAL DIMENSIONS
UP TO 1/8	± .005
ABOVE 1/8 TO 6	± .005
ABOVE 6 TO 24	± .010
ABOVE 24	± .015

ALL DIMENSIONS ARE IN INCHES.
USE FIGURED DIMENSIONS - DO NOT SCALE.

MOORE SCHOOL OF ELECTRICAL ENGINEERING UNIVERSITY OF PENNSYLVANIA	
DC VOLTAGE LETTER DIAL PLATE	
MATERIAL	FINISH
0.032" SHEET ZINC	PLATED & BACKGROUND BLACK LACQUERED
Scale	APPROX. FULL SIZE
Drawn by: MSM	Checked by: [Signature]
Nov. 4, 1944	Approved by: [Signature]
	11-4-44
PX-9-211	