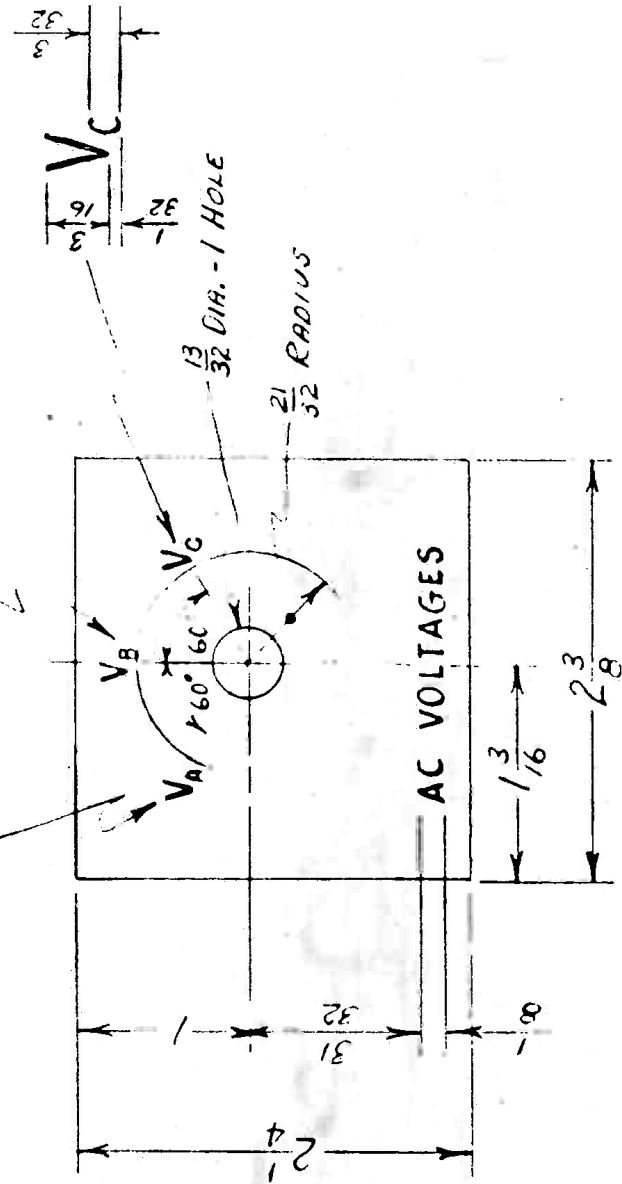


REVISIONS

ETCHINGS VAB; VBC; VCA
CHANGED TO VA; VB; VC

Summers 7 JAN 45 **I**

$\frac{3}{16}$ HIGH - 3 LETTERS
 $\frac{3}{32}$ HIGH - 3 LETTERS



NOTE:
ALL CHARACTERS ARE REVERSED ON PLATE.

VARIATIONS ON FINISHED DIMENSIONS (UNLESS OTHERWISE MARKED)	
BASIC DIMENSIONS	FRACTIONAL DIMENSIONS
1" TO 4"	± 0.005
ABOVE 4" TO 6"	± 0.005
ABOVE 6" TO 24"	± 0.010
ABOVE 24"	± 0.015

ALL DIMENSIONS ARE IN INCHES.
USE FIGURED DIMENSIONS - DO NOT SCALE

MOORE SCHOOL OF ELECTRICAL ENGINEERING
UNIVERSITY OF PENNSYLVANIA

AC VOLTAGE DIAL PLATE

MATERIAL	FINISH	SCALE
0.032" SHEET ZINC	PLATED & BACKGROUND BLACK LACQUERED	APPROX. FULL SIZE

Drawn by <i>MSM</i>	Checked by <i>J. Jones</i>	Approved by <i>J. Jones</i>
Nov. 4, 1944	11 4 44	11 4 44

PX-9-212